

# EXAMINATION PREPARATION

V.Ryan © 2000 - 2009

On behalf of The World Association of Technology Teachers

## W.A.T.T.



World Association of Technology Teachers

This exercise can be printed and used by teachers and students. It is recommended that you view the website ([www.technologystudent.com](http://www.technologystudent.com)) before attempting the design sheet .

THESE MATERIALS CAN BE PRINTED AND USED BY TEACHERS AND STUDENTS.  
THEY MUST NOT BE EDITED IN ANY WAY OR PLACED ON ANY OTHER MEDIA INCLUDING WEB SITES AND INTRANETS.  
NOT FOR COMMERCIAL USE.  
THIS WORK IS PROTECTED BY COPYRIGHT LAW.  
IT IS ILLEGAL TO DISPLAY THIS WORK ON ANY WEBSITE/MEDIA STORAGE OTHER THAN [www.technologystudent.com](http://www.technologystudent.com)

# PARTY PACK / PACKAGE WITH INTEGRAL HANDLE

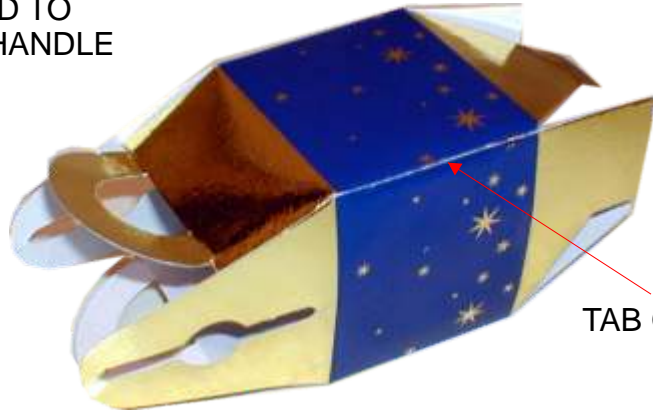
V.Ryan © 2009 World Association of Technology Teachers

The photographs below shows a party pack that has a handle built into it. Only one 'tab' is glued with the top and base of the package folding in such a way that a further gluing is not needed.

Complete the development / net so that the handle is included and any other missing parts.



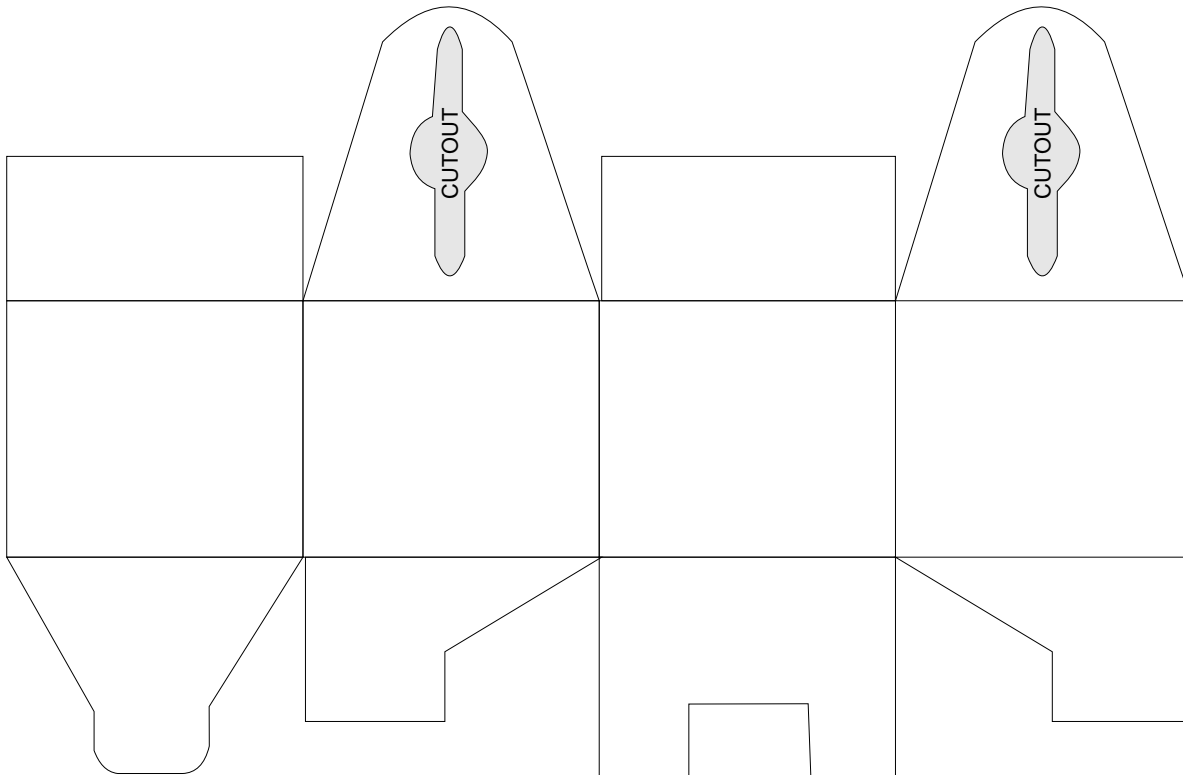
TOP FOLDED TO PRODUCE HANDLE



TAB GLUED



BASED FOLDED



List three advantages of using card for this type of package:

ADVANTAGE 1: \_\_\_\_\_

\_\_\_\_\_

\_\_\_\_\_

ADVANTAGE 2: \_\_\_\_\_

\_\_\_\_\_

\_\_\_\_\_

ADVANTAGE 3 \_\_\_\_\_

\_\_\_\_\_

\_\_\_\_\_