

EXAMINATION PREPARATION

V.Ryan © 2000 - 2009

On behalf of The World Association of Technology Teachers

W.A.T.T.



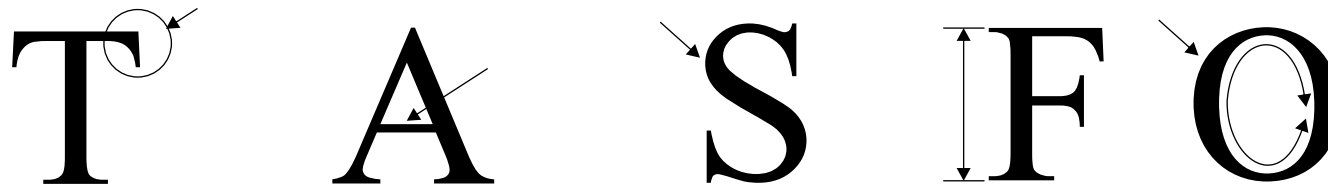
World Association of Technology Teachers

This exercise can be printed and used by teachers and students. It is recommended that you view the website (www.technologystudent.com) before attempting the design sheet .

THESE MATERIALS CAN BE PRINTED AND USED BY TEACHERS AND STUDENTS.
THEY MUST NOT BE EDITED IN ANY WAY OR PLACED ON ANY OTHER MEDIA INCLUDING WEB SITES AND INTRANETS.
NOT FOR COMMERCIAL USE.
THIS WORK IS PROTECTED BY COPYRIGHT LAW.
IT IS ILLEGAL TO DISPLAY THIS WORK ON ANY WEBSITE/MEDIA STORAGE OTHER THAN www.technologystudent.com

EXAMINATION QUESTION

V.Ryan © 2008 World Association of Technology Teachers



1. The style opposite is quite plain. However, each letter is composed of distinct parts. These are:

- STEM
- SERIF
- CURVE
- CONTINUOUS CURVE
- BAR

Identify each distinct part on the style of writing opposite.

PARTY

2. Times Roman is the font used to print Party Packs between the guidelines, see opposite. Identify font / lettering characteristics such as serifs with labels and arrows on the text below.

THEMES AND PACKS

A.

Party **T**ime
KERNING APPLIED

B.

Party **T**ime
KERNING NOT APPLIED

3. Which of the two 'Party Time' titles has kerning applied - A or B?

ANSWER: _____