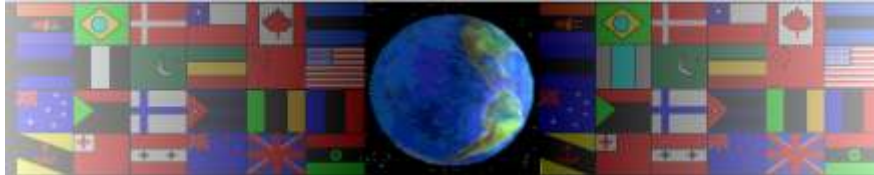


DEVELOPMENTS / NETS

V.Ryan © 2000 - 2010

On behalf of The World Association of Technology Teachers

W.A.T.T.



World Association of Technology Teachers

This exercise can be printed and used by teachers and students. It is recommended that you view the website (www.technologystudent.com) before attempting the design sheet .

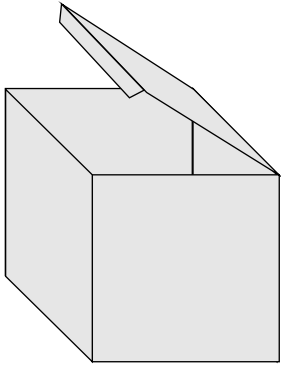
THESE MATERIALS CAN BE PRINTED AND USED BY TEACHERS AND STUDENTS.
THEY MUST NOT BE EDITED IN ANY WAY OR PLACED ON ANY OTHER MEDIA INCLUDING WEB SITES AND INTRANETS.
NOT FOR COMMERCIAL USE.
THIS WORK IS PROTECTED BY COPYRIGHT LAW.
IT IS ILLEGAL TO DISPLAY THIS WORK ON ANY WEBSITE/MEDIA STORAGE OTHER THAN www.technologystudent.com

DEVELOPMENTS / NETS

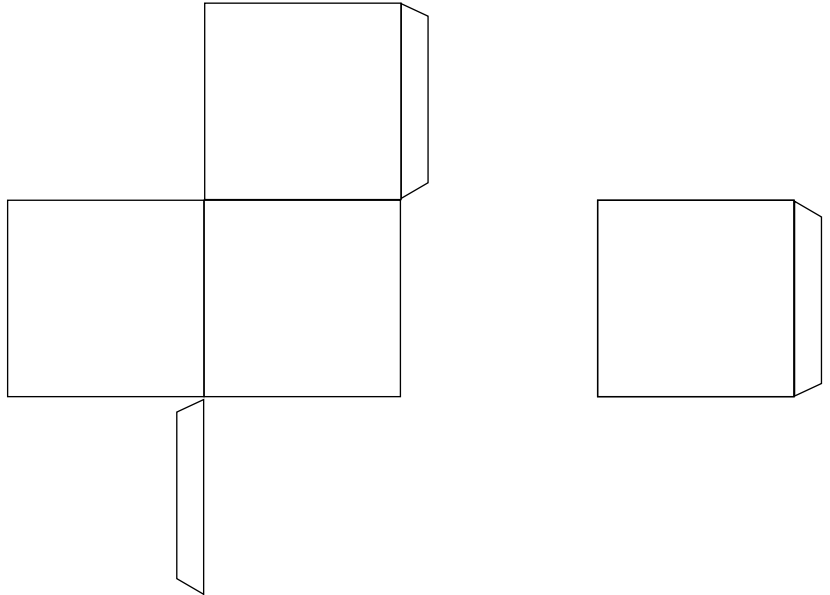
V.Ryan © 2010 World Association of Technology Teachers

1. A simple package is drawn below in 3D. Complete the net / development of the same package, by adding the missing parts. The missing parts are drawn under the 3D package, simply sketch them in the right position, completing the net / development

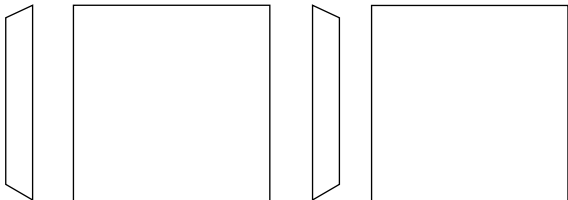
3D PACKAGE



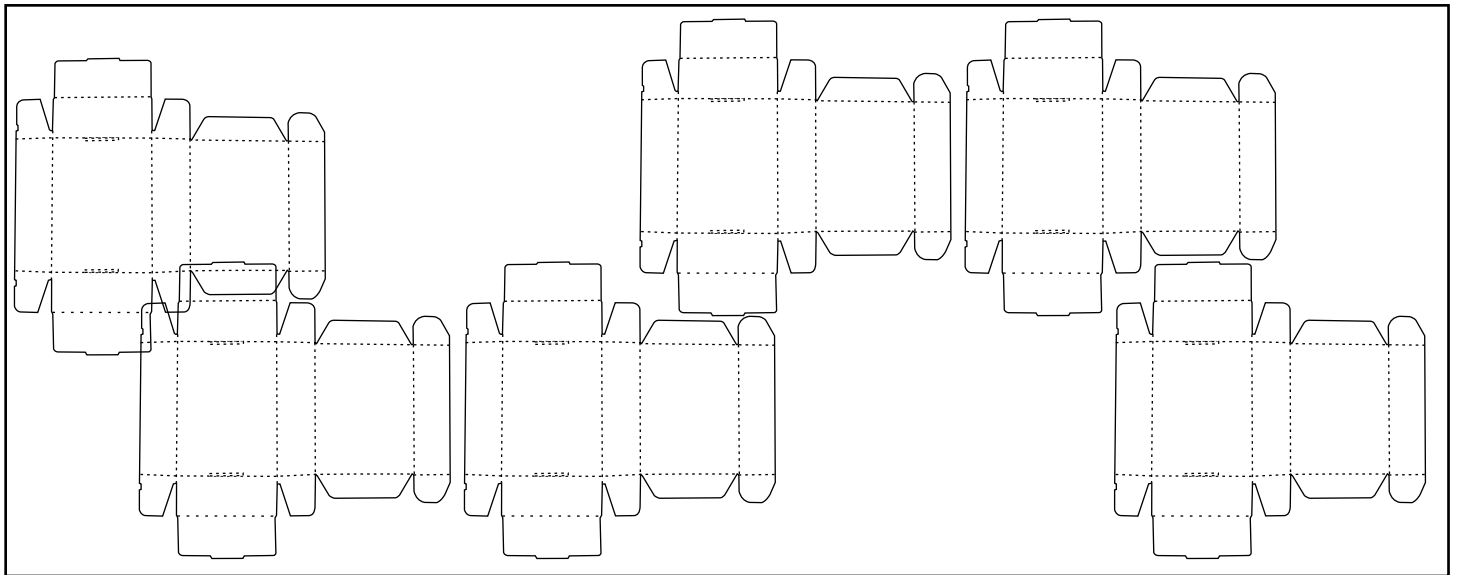
INCOMPLETE NET / DEVELOPMENT



MISSING PARTS



2. An incomplete set of nets / developments have been drawn below. Fill the gaps with individual nets, to complete the tessellation.



3. List products that make use of card packaging.

4. When packaging is manufactured, why are the nets / developments arranged forming a tessellation ?
