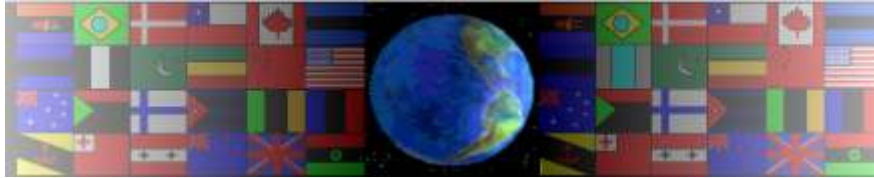


THE WATER WHEEL

V.Ryan © 2000 - 2009

On behalf of The World Association of Technology Teachers

W.A.T.T.



World Association of Technology Teachers

This exercise can be printed and used by teachers and students. It is recommended that you view the website (www.technologystudent.com) before attempting the design sheet .

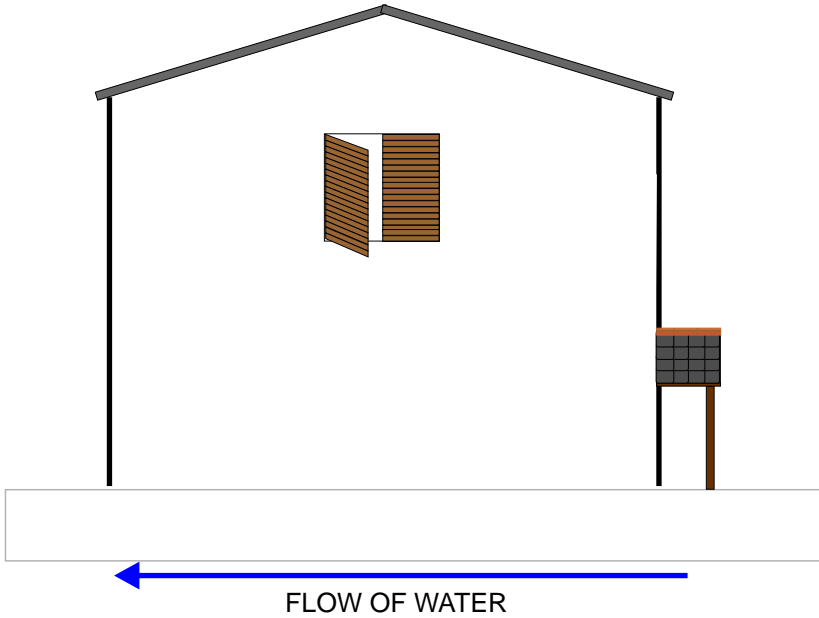
THESE MATERIALS CAN BE PRINTED AND USED BY TEACHERS AND STUDENTS.
THEY MUST NOT BE EDITED IN ANY WAY OR PLACED ON ANY OTHER MEDIA INCLUDING WEB SITES AND INTRANETS.
NOT FOR COMMERCIAL USE.
THIS WORK IS PROTECTED BY COPYRIGHT LAW.
IT IS ILLEGAL TO DISPLAY THIS WORK ON ANY WEBSITE/MEDIA STORAGE OTHER THAN www.technologystudent.com

THE WATER WHEEL

V.Ryan © 2009 World Association of Technology Teachers

1. The water wheel provided power to industry for hundreds of years and especially during the early years of the Industrial Revolution. Describe how the rotating wheel was converted into usable power.

UNDERSHOT SYSTEM



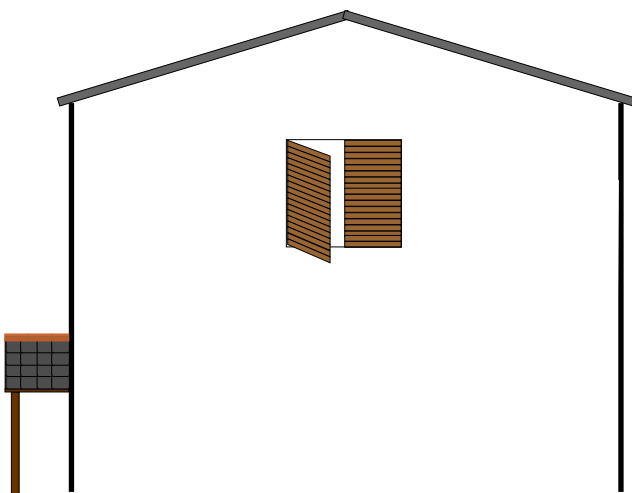
2. Complete the drawing opposite, so that it shows an undershot water wheel system.

3. How efficient is an undershot system ?

4. What are the advantages of having a DAM, when used in conjunction with a water wheel?

5. Complete the diagram of an overshot water wheel system, seen below.

OVERSHOT SYSTEM



6. How efficient is an undershot system ?
