

# LARGE SCALE CHARITY BOX WITH BUILT IN HANDLE

V.Ryan © 2000 - 2016

On behalf of The World Association of Technology Teachers

## W.A.T.T.



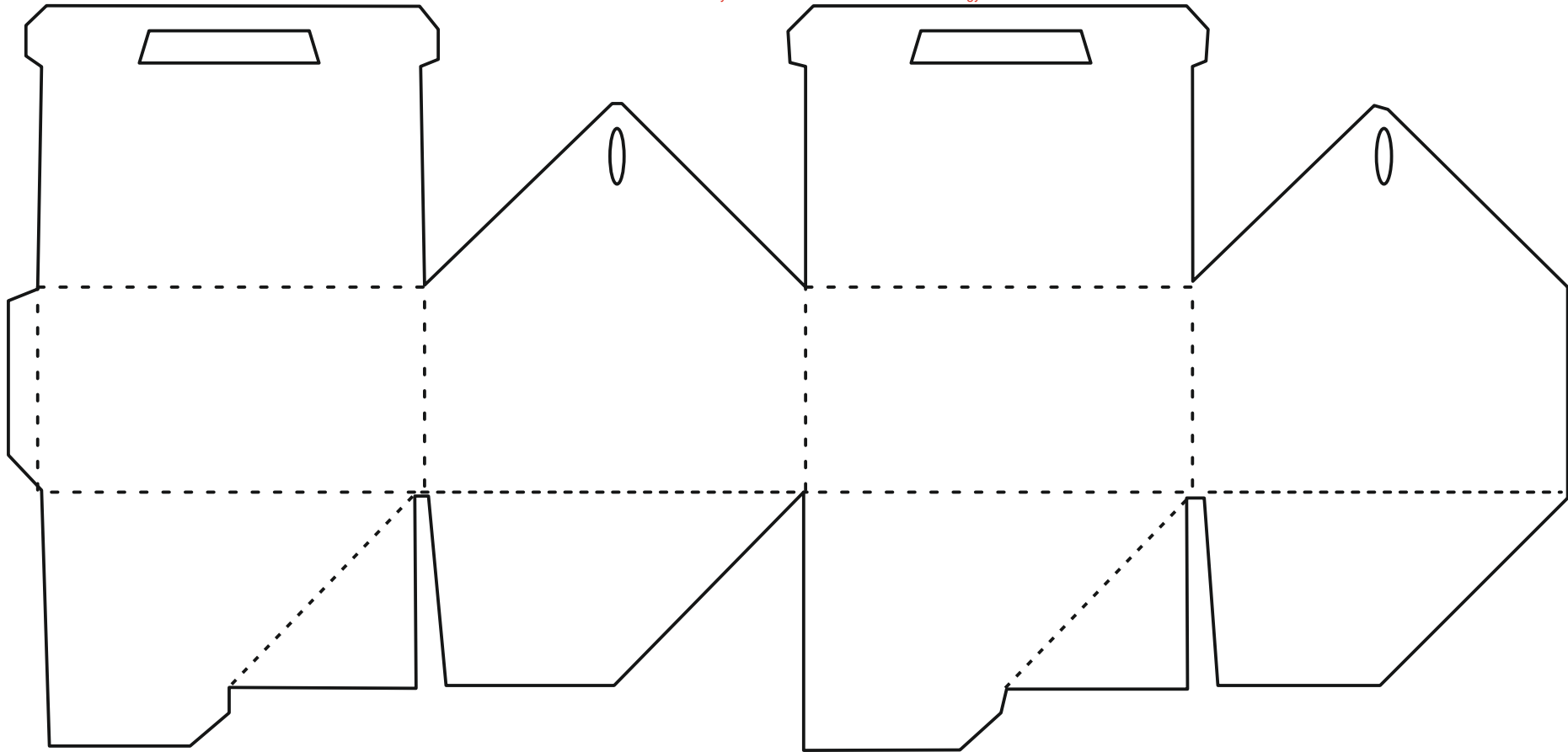
World Association of Technology Teachers

This exercise can be printed and used by teachers and students. It is recommended that you view the website ([www.technologystudent.com](http://www.technologystudent.com)) before attempting the design sheet .

THESE MATERIALS CAN BE PRINTED AND USED BY TEACHERS AND STUDENTS.  
THEY MUST NOT BE EDITED IN ANY WAY OR PLACED ON ANY OTHER MEDIA INCLUDING WEB SITES AND INTRANETS.  
NOT FOR COMMERCIAL USE.  
THIS WORK IS PROTECTED BY COPYRIGHT LAW.  
IT IS ILLEGAL TO DISPLAY THIS WORK ON ANY WEBSITE/MEDIA STORAGE OTHER THAN [www.technologystudent.com](http://www.technologystudent.com)

# LARGE SCALE CHARITY BOX WITH BUILT IN HANDLE

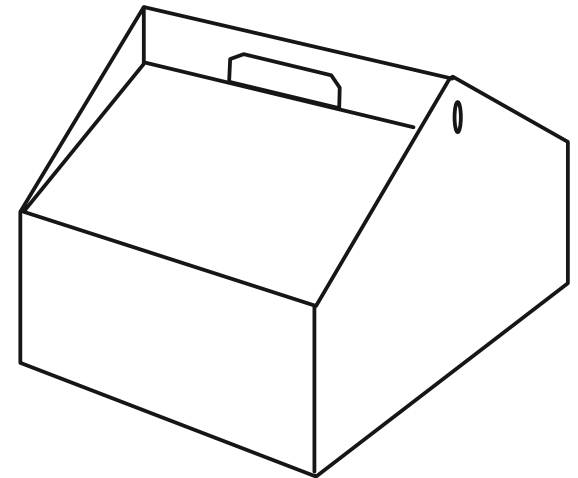
V.Ryan © 2016 World Association of Technology Teachers

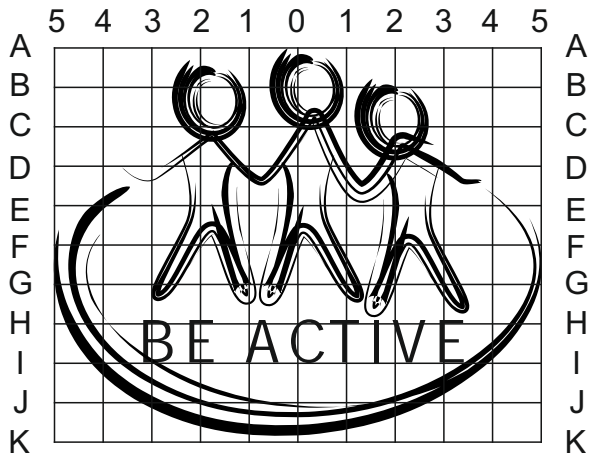


This is a charity collection box (for clothing) with a built in handle. Cut out the scaled down net (development) shown above and fold it to form the 3D box.

Explain why this charity box could be useful for collecting donated clothing.

1. \_\_\_\_\_  
\_\_\_\_\_
2. \_\_\_\_\_  
\_\_\_\_\_





1. Using the grid system shown opposite as a drawing aid, draw an accurate version of the 'Be Active' logo. Use the grid on the side of the charity box.

2. What other information / details should appear on the charity box?

---



---



---



---



---



---



---



---

