

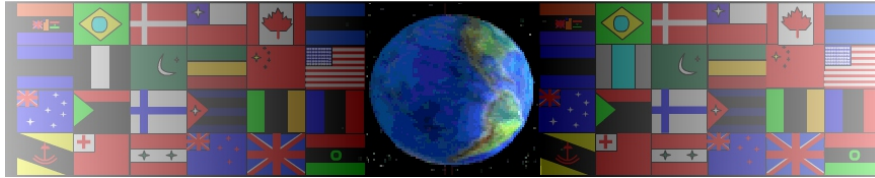
REVISION CARDS - METAL FINISHES - 3

PLANISHING, SPRAY PAINTING AND BRUSH PAINTING OF METALS

V.Ryan © 2000 - 2018

On behalf of The World Association of Technology Teachers

W.A.T.T.



World Association of Technology Teachers

This exercise can be printed and used by teachers and students. It is recommended that you view the website (www.technologystudent.com) before attempting the design sheet .

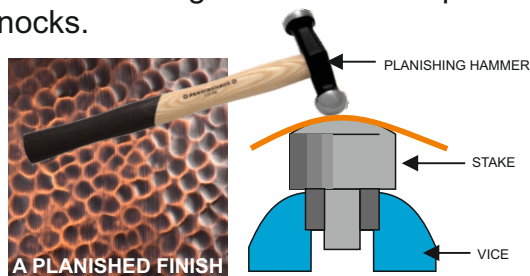
THESE MATERIALS CAN BE PRINTED AND USED BY TEACHERS AND STUDENTS.
THEY MUST NOT BE EDITED IN ANY WAY OR PLACED ON ANY OTHER MEDIA INCLUDING WEB SITES AND INTRANETS.
NOT FOR COMMERCIAL USE.
THIS WORK IS PROTECTED BY COPYRIGHT LAW.
IT IS ILLEGAL TO DISPLAY THIS WORK ON ANY WEBSITE/MEDIA STORAGE OTHER THAN www.technologystudent.com

REVISION CARDS - METAL FINISHES - 3

PLANISHED / HAMMERED FINISH

A planishing hammer is used to 'hammer' a patterned finish into the surface of a metal.

Copper is often given a planished / hammered finish. It is first softened by a heat treatment process called annealing. It is cleaned before being planished. As the copper is 'planished', it is rotated on the stake. Planishing hardens the metal, ensuring the final shape (such as a bowl) has the strength to resist drops and knocks.



www.technologystudent.com © 2017

SPRAY PAINT FINISHES FOR METAL

Spray paints (in the form of spray cans) can be bought straight 'off the shelf' of most hardware stores.

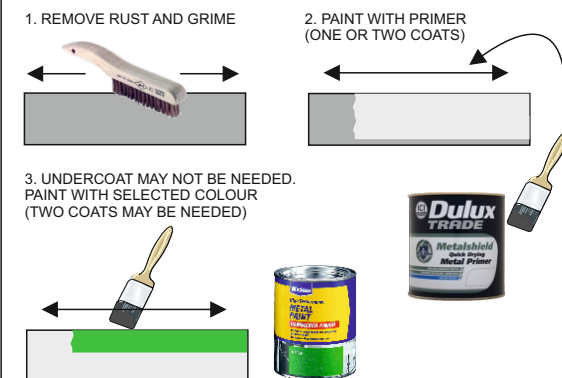


Metal may need a primer and undercoat, although it depends on the instructions on the paint can. Hammerite paint can be applied to a surface without the need for a primer or undercoat. Some cheaper paint sprays need a carefully cleaned surface, prepared with primer and an undercoat.

www.technologystudent.com © 2017

BRUSH PAINT FINISHES FOR METAL

Paint can also be applied with a brush. Again the surface should be clean of rust and grease. Depending on the instructions written on the tin, a primer coat and undercoat may be required. Some brush-able paints only need one coat, without a primer or undercoat.



www.technologystudent.com © 2017

1. What is a planished finish and how is it achieved? 4 marks

2. What are the two main ways of applying paint? 2 marks

3. When painting, how is the metal surface prepared? 3 marks
