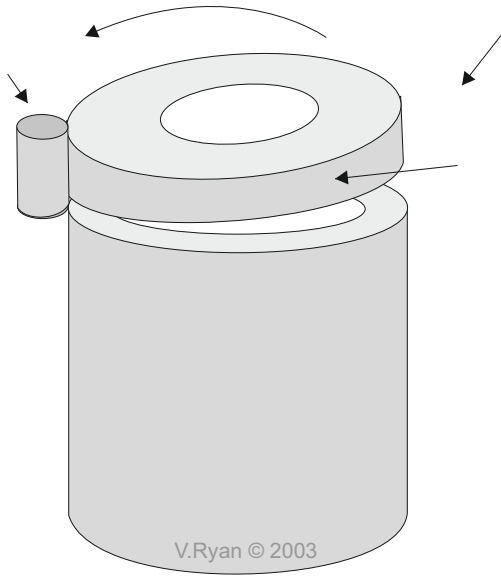


CASTING

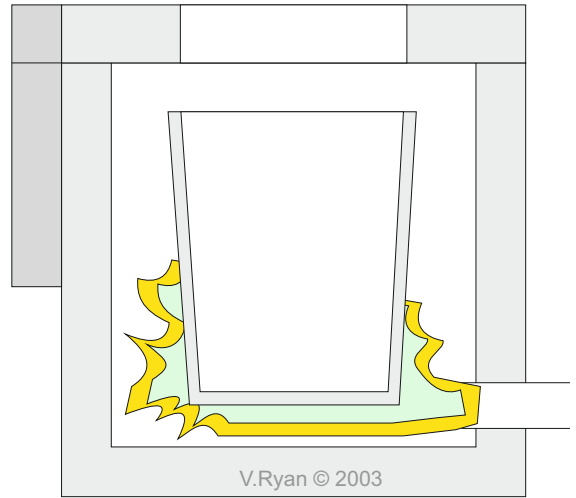
V.Ryan © 2009 World Association of Technology Teachers

HELPFUL LINK: <https://technologystudent.com/equip1/equipex1.htm>

1. A typical cylindrical furnace, used in the casting of aluminium, is shown below. The diagrams are incomplete. Finish the diagrams by adding the missing parts and labels.



**CYLINDRICAL
FURNACE**



2. A figure wearing suitable protective clothing is shown below. Name the protective clothing and add a simple description of each piece.

