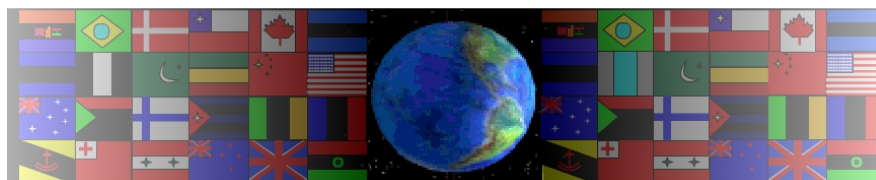


# ALESSANDRO MENDINI

V.Ryan © 2000 - 2012

On behalf of The World Association of Technology Teachers

## W.A.T.T.



World Association of Technology Teachers

This exercise can be printed and used by teachers and students. It is recommended that you view the website ([www.technologystudent.com](http://www.technologystudent.com)) before attempting the design sheet .

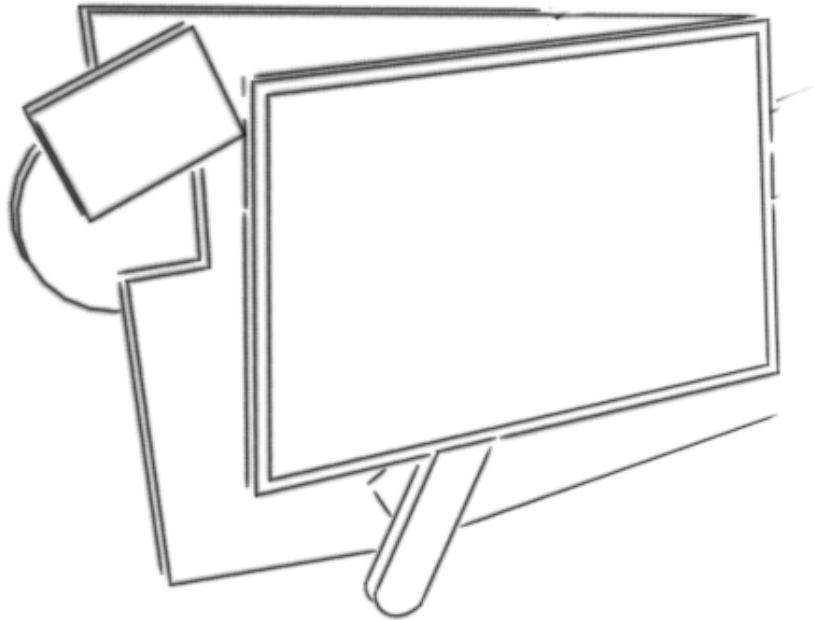
THESE MATERIALS CAN BE PRINTED AND USED BY TEACHERS AND STUDENTS.  
THEY MUST NOT BE EDITED IN ANY WAY OR PLACED ON ANY OTHER MEDIA INCLUDING WEB SITES AND INTRANETS.  
NOT FOR COMMERCIAL USE.  
THIS WORK IS PROTECTED BY COPYRIGHT LAW.  
IT IS ILLEGAL TO DISPLAY THIS WORK ON ANY WEBSITE/MEDIA STORAGE OTHER THAN [www.technologystudent.com](http://www.technologystudent.com)

# ALESSANDRO MENDINI

V.Ryan © 2012 World Association of Technology Teachers

An incomplete sketch of a Mirror designed by Alessandro Mendini is seen below.

Complete the sketch and add the correct colour scheme.



What is the name of the mirror?

---

In what year was the mirror designed?

---

Name the unusual table, designed by Alessandro Mendini (seen opposite)

---

Describe the tables unusual features

---

---

---

---

---

---

---

