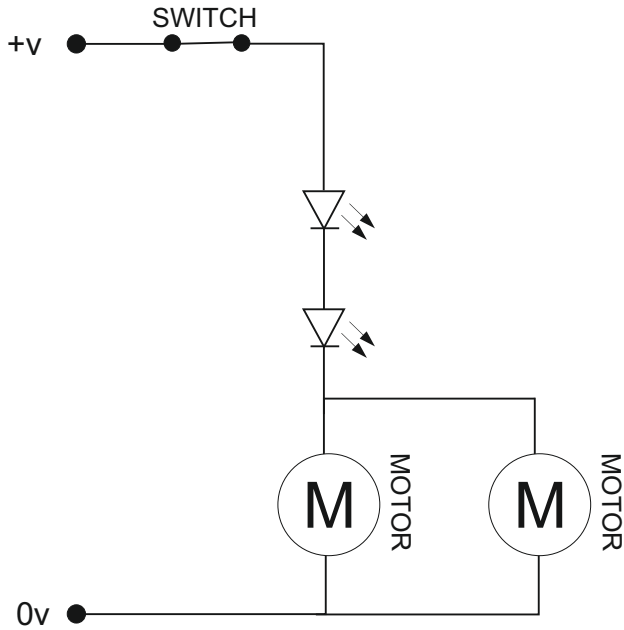


CIRCUITS IN SERIES AND PARALLEL

V.Ryan © 2009-2022 World Association of Technology Teachers

HELPFUL LINK: <https://technologystudent.com/elec1/spc1.htm>



1. The circuit seen opposite is part in series and part in parallel.
Draw a circle round the series part and label 'SERIES'.

Draw a circle round the parallel part and label 'PARALLEL'.

2. Name a piece of electronics simulation software that could be used to draw a circuit similar to the circuit shown opposite.

NAME: _____

3. What will happen to the circuit if one of the LEDs fails?

4. What will happen to the circuit if one of the motors fails?

5. In your opinion what part of the circuit is its weak point? Explain your answer.

6. Redesign the circuit shown above so that all the components are in parallel and LEDs. You may need to add other components in order to protect the LEDs.