

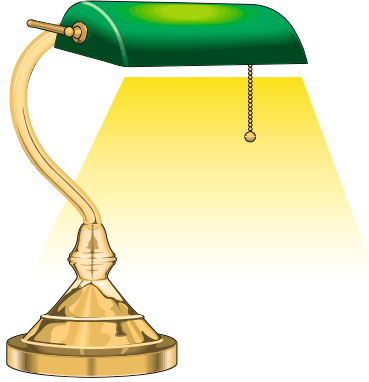
INCANDESCENT LAMPS (BULBS)

V.Ryan © 2009-2022 World Association of Technology Teachers

HELPFUL LINK: <https://technologystudent.com/elec1/bulb2.htm>

Filament bulbs are used in many applications in and around the home. Name and sketch four examples that you have seen. Add a description of each example.

EXAMPLE ANSWER

NAME	DESCRIPTION	SKETCH
<u>FILAMENT BULB</u>	<u>A simple filament bulb is used in table lamp. As the cord is pulled it activates a switch, allowing current to flow, lighting the bulb. Lamps like this are common.</u>	

NAME	DESCRIPTION	SKETCH
<hr/> <hr/>	<hr/> <hr/> <hr/> <hr/> <hr/> <hr/>	

NAME	DESCRIPTION	SKETCH
<hr/> <hr/>	<hr/> <hr/> <hr/> <hr/> <hr/> <hr/>	

INCANDESCENT LAMPS (BULBS)

V.Ryan © 2009-2022 World Association of Technology Teachers

NAME

DESCRIPTION

SKETCH

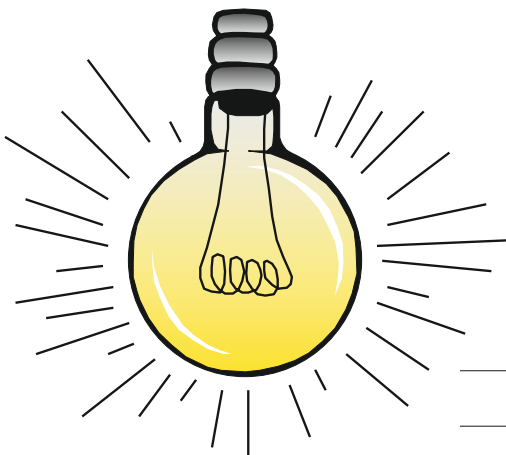
NAME

DESCRIPTION

SKETCH

The two bulbs below look very different. However, they are both composed of a filament, placed inside an envelope of glass. The glass envelope of each bulb contains a gas. However, one of the bulbs is used in the house for producing standard light and the other is used in a car head light and is very bright.

BULB 'A'



The household bulb is: _____

The car headlight bulb is: _____

Explain the differences between bulb 'A' and bulb 'B'. You may wish to search the internet for scientific / technical information on both bulbs

BULB 'B'

