

HOUSE ANALYSIS

V.Ryan © 2000 - 2008

On behalf of The World Association of Technology Teachers

W.A.T.T.



World Association of Technology Teachers

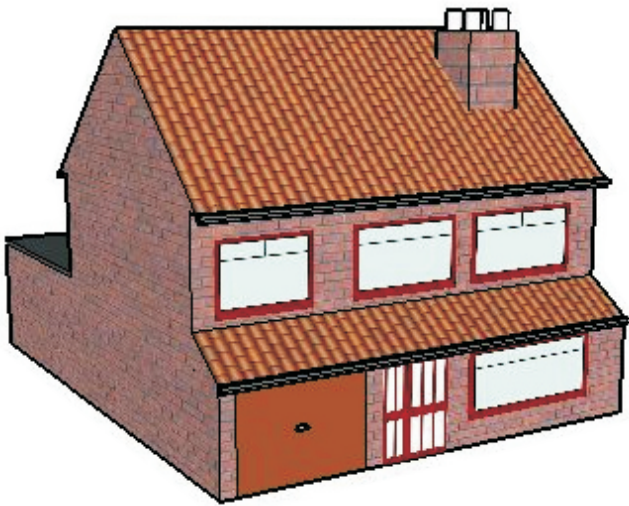
The 'House Analysis Exercise' can be printed and used by teachers and students. It is recommended that you view the website section 'Graphics' (www.technologystudent.com) before attempting the design sheet .

THESE MATERIALS CAN BE PRINTED AND USED BY TEACHERS AND STUDENTS.
THEY MUST NOT BE EDITED IN ANY WAY OR PLACED ON ANY OTHER MEDIA INCLUDING WEB SITES AND INTRANETS.
NOT FOR COMMERCIAL USE.
THIS WORK IS PROTECTED BY COPYRIGHT LAW.
IT IS ILLEGAL TO DISPLAY THIS WORK ON ANY WEBSITE/MEDIA STORAGE OTHER THAN www.technologystudent.com

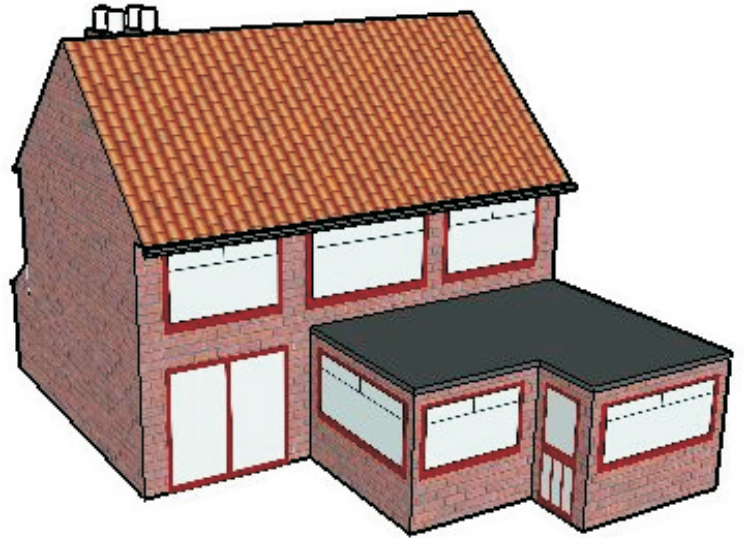
HOUSE DESIGN ANALYSIS

V.Ryan © 2008 World Association of Technology Teachers

Two views of the same detached house are shown below. Study the front and back of the house carefully and then try to answer the following questions.



FRONT



BACK

1. How many bedrooms do you think the house has?

2. How many sides of the roof(s) are tiled?

3. How many external doors does the house have?

4. Why is the house called a detached house?

5. How many people do you think could live in the house comfortably? Explain your answer.

6. List the function of each room. For example, kitchen etc.....

7. How do you think the house could be improved?
