

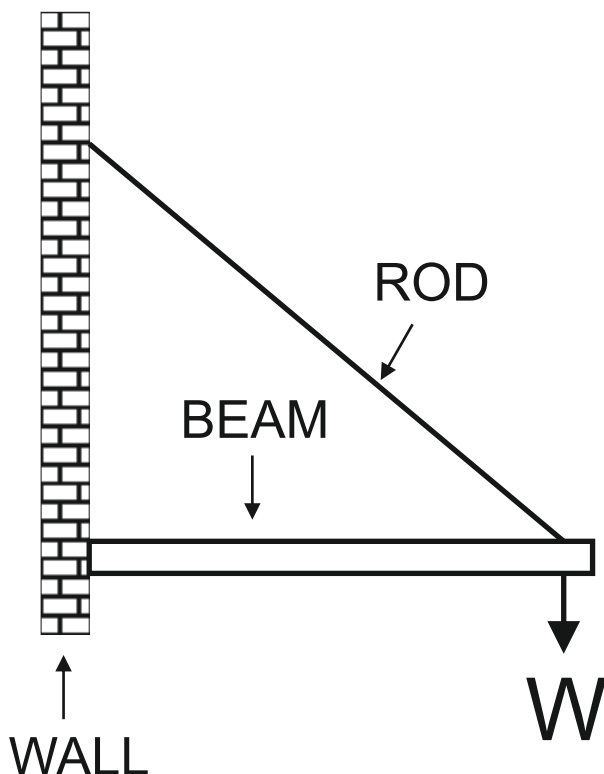
EXAMINATION QUESTIONS - STRUTS AND TIES

HELPFUL LINKS: <https://technologystudent.com/struct1/strut1.htm>

1. What is a STRUT? **2 marks**

2. What is a TIE? **2 marks**

3a. The diagram below, shows a beam held in position by a steel rod. Label the STRUT and TIE. **2 marks**



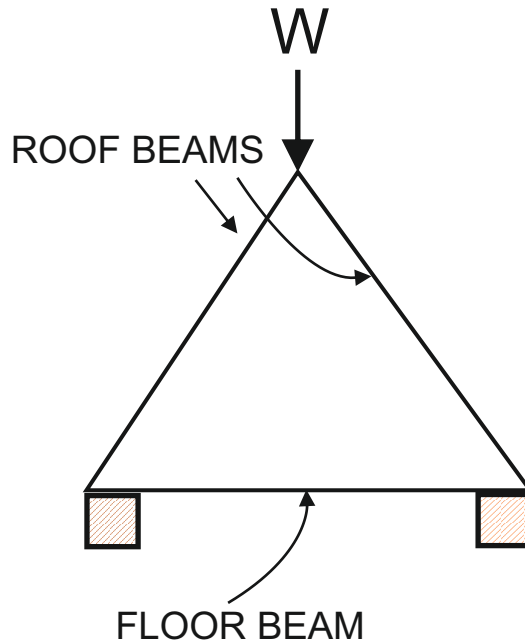
3b. Describe the forces being applied to the STRUT. **2 marks**

3c. Describe the forces being applied to the TIE. **2 marks**

EXAMINATION QUESTIONS - STRUTS AND TIES

HELPFUL LINKS: <https://technologystudent.com/struct1/strut1.htm>

4a. The diagram below, shows the roof and floor beams of a house. Label the forces being applied to each beam. **2 marks**



4b. Explain the forces being applied to each beam. **2 marks**

5. On a separate sheet of paper / PowerPoint slide, draw a diagram of any part of a building and label the forces being applied to it. Include struts, and ties.

Include a written explanation (below). **5 marks**
