

# TRANSISTOR

V.Ryan © 2009-2022 World Association of Technology Teachers

**HELPFUL LINK:** <https://technologystudent.com/elec1/transis1.htm>

1. There are two main types of transistors. What are they?

---

2. A transistor can be regarded as a type of ?

(UNDERLINE THE CORRECT ANSWER)

RESISTOR      SWITCH      DIODE      AMPLIFIER      RELAY      WIRE

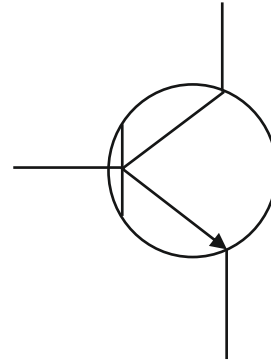
3. A transistor has three legs/leads. Name them.

NAME 1: \_\_\_\_\_

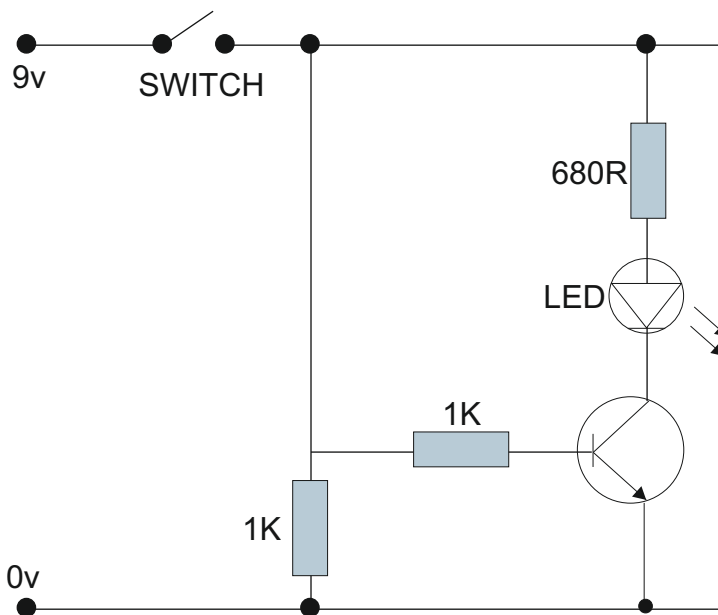
NAME 2: \_\_\_\_\_

NAME 3: \_\_\_\_\_

4. On the symbol shown opposite label the three legs/leads.



5. The circuit shown below is a simple transistor circuit. Explain how it works and emphasise the role played by the transistor. You may wish to complete the labelling of the circuit diagram to aid your explanation.



---

---

---

---

---

---

---

---

6. Why is a resistor positioned before the transistor?

---

---