

# PACKED LUNCH CONTAINER - RECYCLABLE CARD

V.Ryan © 2000 - 2013

On behalf of The World Association of Technology Teachers

## W.A.T.T.



World Association of Technology Teachers

This exercise can be printed and used by teachers and students. It is recommended that you view the website ([www.technologystudent.com](http://www.technologystudent.com)) before attempting the design sheet .

THESE MATERIALS CAN BE PRINTED AND USED BY TEACHERS AND STUDENTS.  
THEY MUST NOT BE EDITED IN ANY WAY OR PLACED ON ANY OTHER MEDIA INCLUDING WEB SITES AND INTRANETS.  
NOT FOR COMMERCIAL USE.  
THIS WORK IS PROTECTED BY COPYRIGHT LAW.  
IT IS ILLEGAL TO DISPLAY THIS WORK ON ANY WEBSITE/MEDIA STORAGE OTHER THAN [www.technologystudent.com](http://www.technologystudent.com)

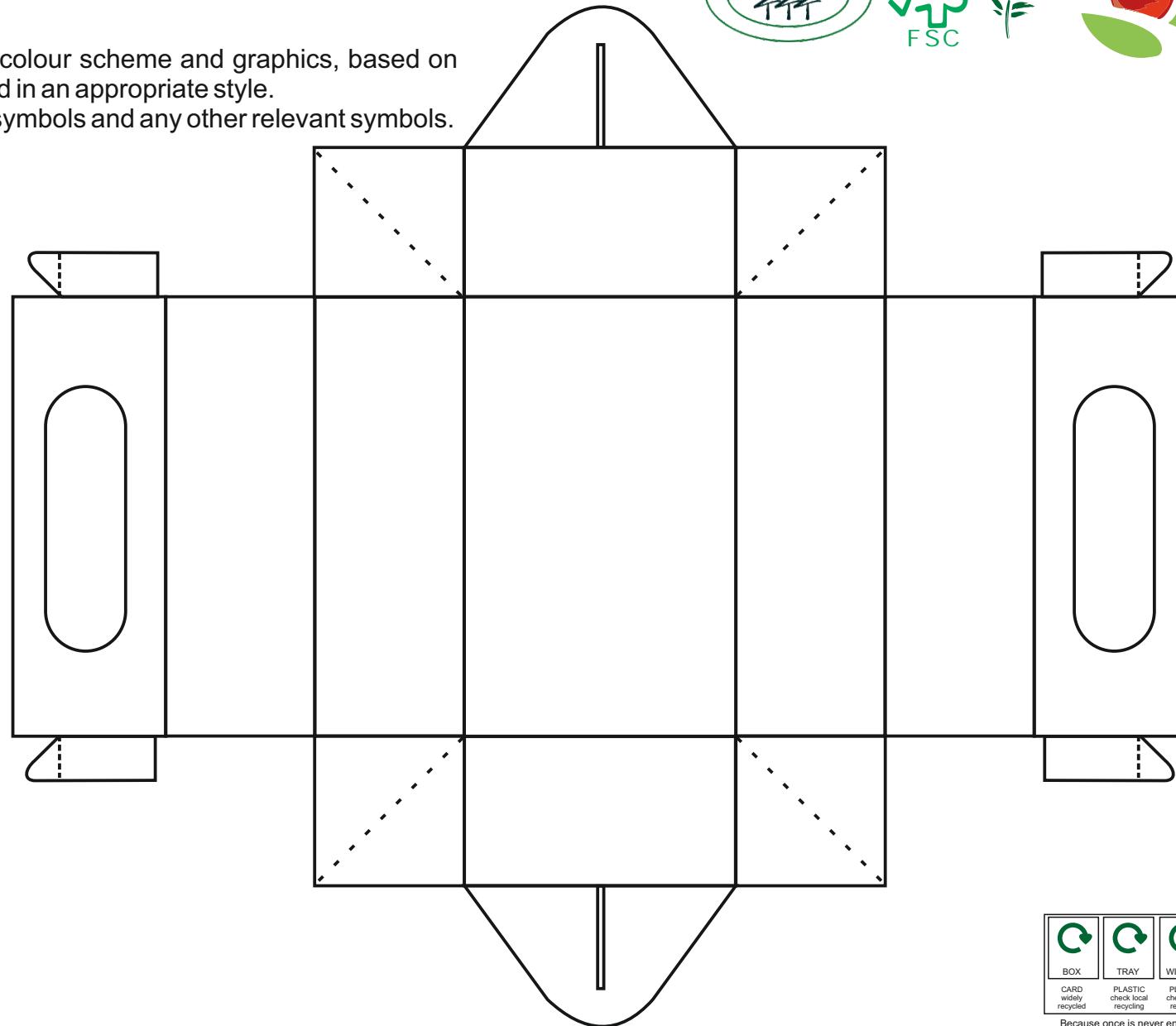
# SAMPLE CARD PACKED LUNCH CONTAINER



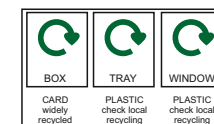
1. The package seen opposite is for a packed lunch container, for a young child. It can be purchased in shops and supermarkets, in packs of five (one for each day of the school week).

Complete the design of the package. Add a colour scheme and graphics, based on healthy eating. Add a product name, presented in an appropriate style. Include a barcode, recycling symbols, safety symbols and any other relevant symbols.

Use the space below for rough sketches / designs.



www.technologystudent.com



Because once is never enough  
We've designed this box to be reused