

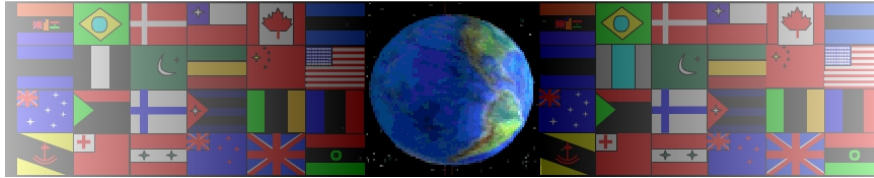
# ALUMINIUM CASTING EXAMINATION QUESTION

WORLD ASSOCIATION OF TECHNOLOGY TEACHERS <https://www.facebook.com/groups/254963448192823/> [www.technologystudent.com](http://www.technologystudent.com) © 2017 V.Ryan © 2017

V.Ryan © 2000 - 2017

On behalf of The World Association of Technology Teachers

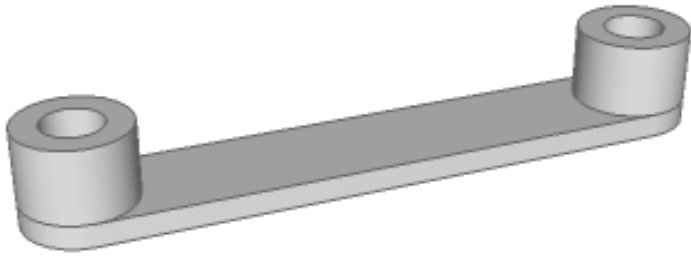
## W.A.T.T.



World Association of Technology Teachers

This exercise can be printed and used by teachers and students. It is recommended that you view the website ([www.technologystudent.com](http://www.technologystudent.com)) before attempting the design sheet .

THESE MATERIALS CAN BE PRINTED AND USED BY TEACHERS AND STUDENTS.  
THEY MUST NOT BE EDITED IN ANY WAY OR PLACED ON ANY OTHER MEDIA INCLUDING WEB SITES AND INTRANETS.  
NOT FOR COMMERCIAL USE.  
THIS WORK IS PROTECTED BY COPYRIGHT LAW.  
IT IS ILLEGAL TO DISPLAY THIS WORK ON ANY WEBSITE/MEDIA STORAGE OTHER THAN [www.technologystudent.com](http://www.technologystudent.com)



It has been decided that the plastic being used for the coupling wears out too quickly. Aluminium is to be used.

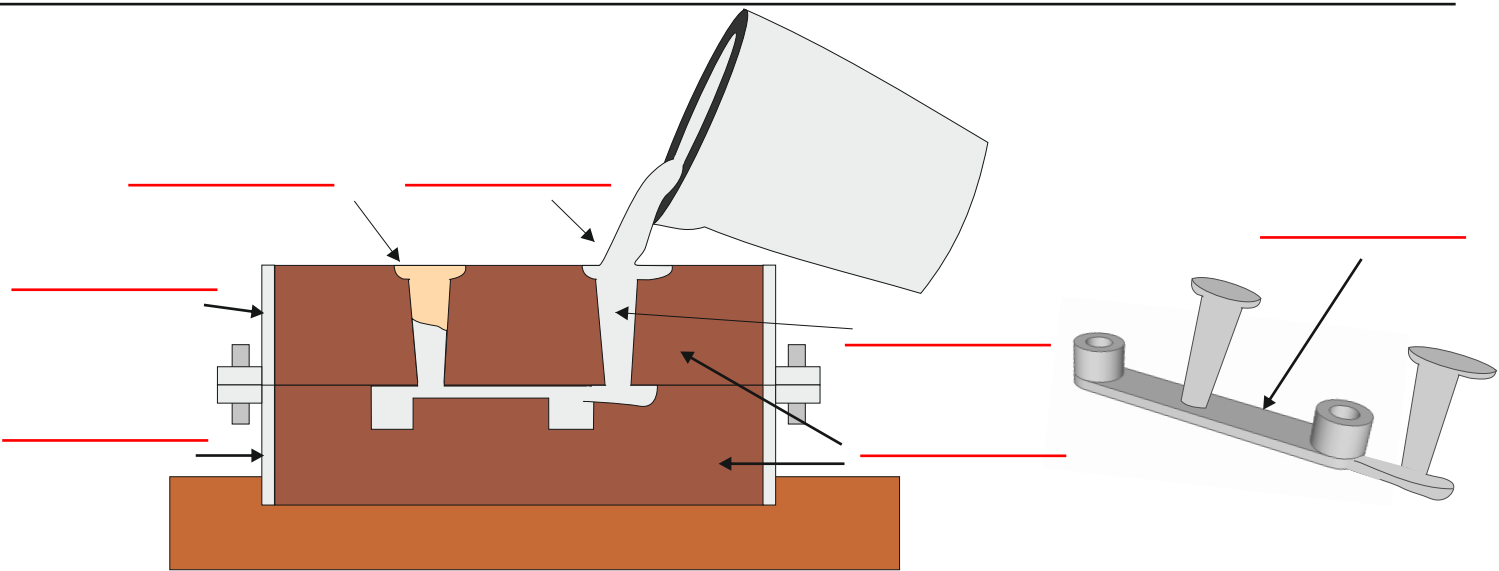
Write two advantages of using aluminium:

ADVANTAGE ONE: \_\_\_\_\_

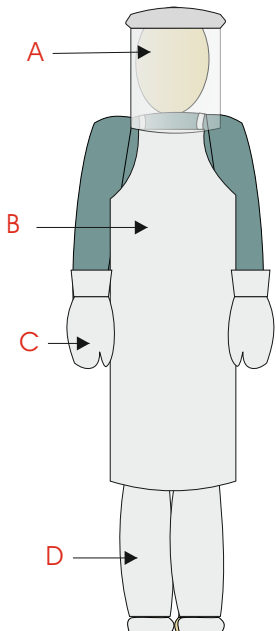
ADVANTAGE ONE: \_\_\_\_\_

WORLD ASSOCIATION OF TECHNOLOGY TEACHERS <https://www.facebook.com/groups/254963448192823/> [www.technologystudent.com](http://www.technologystudent.com) © 2017 V.Ryan © 2017

A manufacturing process called casting is to be used to make the new coupling. Complete the diagram of casting shown below by adding appropriate labels.



When casting it is extremely important to wear the correct safety equipment shown on the diagram below. Name each piece of equipment and explain why each is necessary.



NAME A: \_\_\_\_\_

EXPLANATION: \_\_\_\_\_

NAME B: \_\_\_\_\_

EXPLANATION: \_\_\_\_\_

NAME C: \_\_\_\_\_

EXPLANATION: \_\_\_\_\_

NAME D: \_\_\_\_\_

EXPLANATION: \_\_\_\_\_