

You will need to print out this page, to complete the exercise. Click on the link, where it appears on this sheet, for guidance and samples.

INTRODUCTION TO TWO POINT PERSPECTIVE

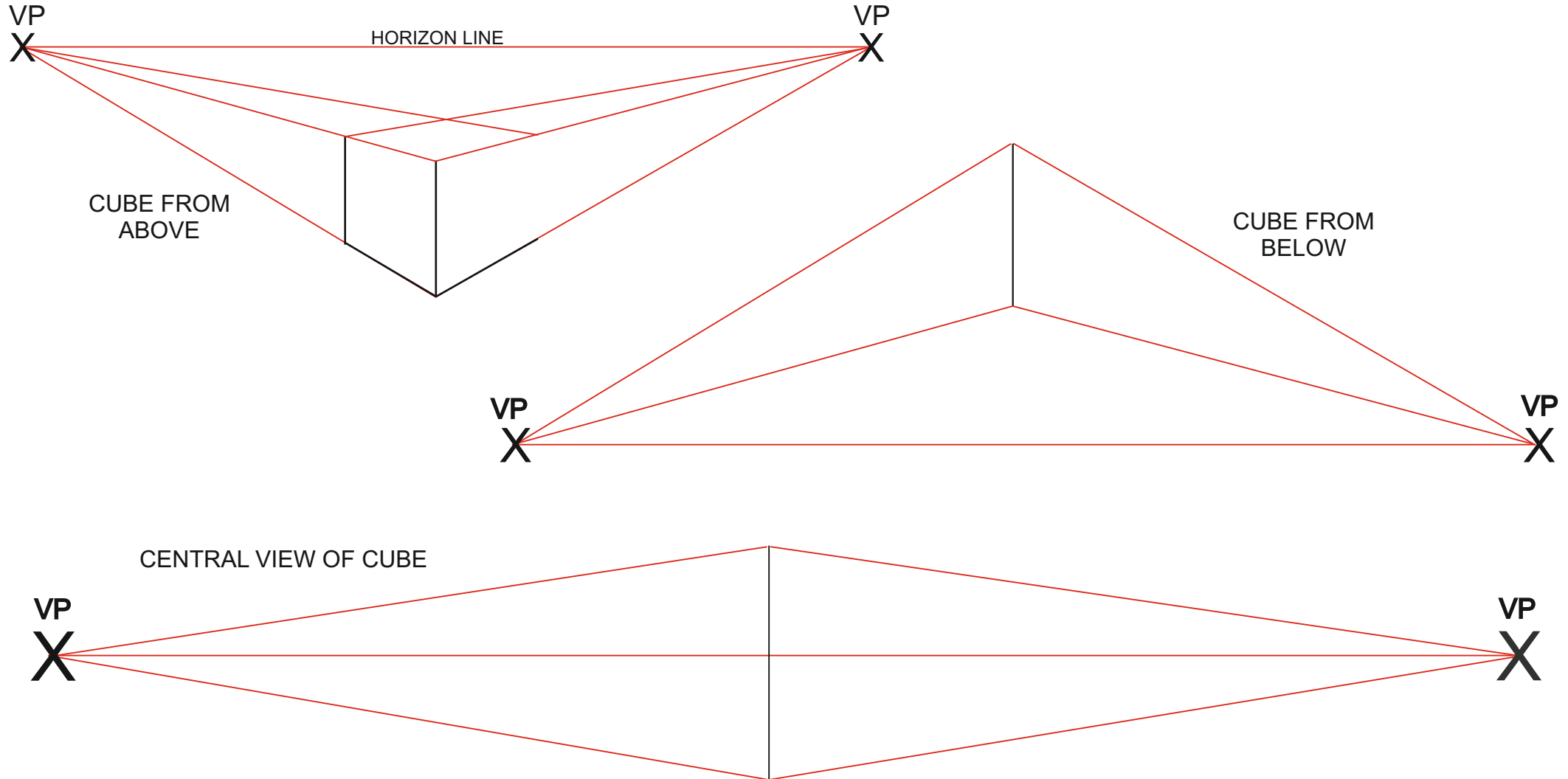
A

WORLD ASSOCIATION OF TECHNOLOGY TEACHERS <https://www.facebook.com/groups/254963448192823/> www.technologystudent.com © 2020 V.Ryan © 2020

EXERCISE 1

What you need to do:

COMPLETE EACH PERSPECTIVE DRAWING. THE HORIZON LINE (CALLED THE HORIZON) FOR EACH DRAWING, IS IN DIFFERENT POSITIONS. THIS MEANS THAT THE CUBES CAN BE VIEWED FROM ABOVE, CENTRALLY AND FROM BELOW.



You will need to print out this page, to complete the exercise. Click on the link, where it appears on this sheet, for guidance and samples.

INTRODUCTION TO TWO POINT PERSPECTIVE

EXERCISE 2

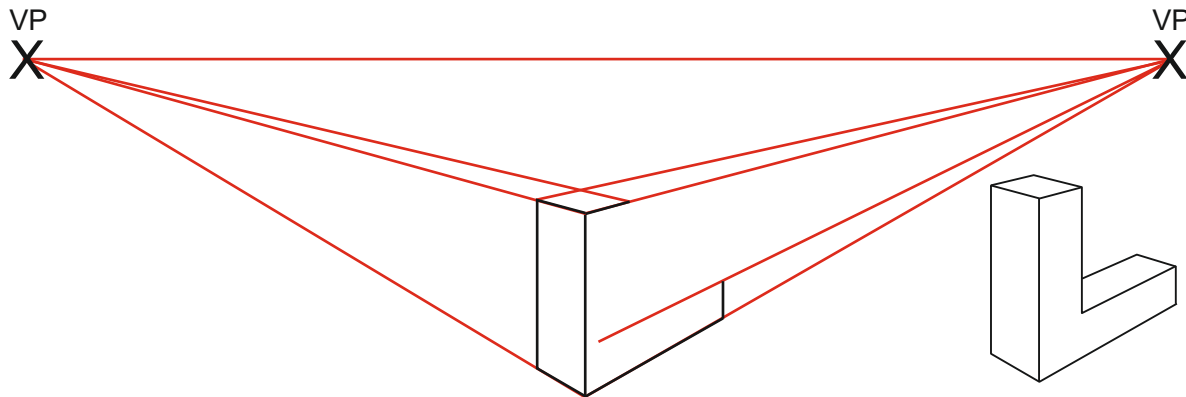
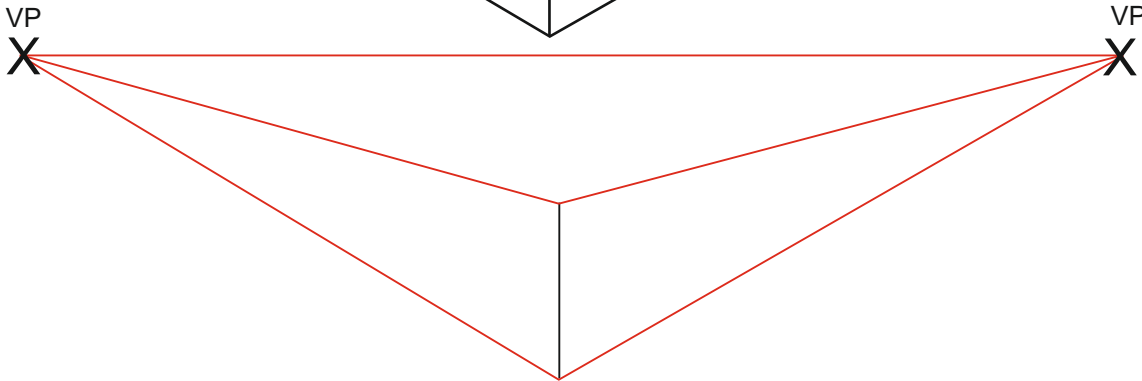
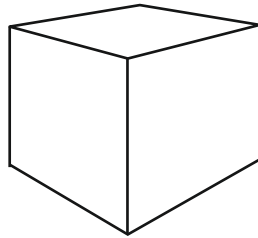
What you need to do:

FINISH THE TWO PERSPECTIVE DRAWINGS, BY ADDING THE MISSING LINES.

ADD SHADE/ COLOUR TO ENHANCE THE 3D EFFECT.



LINK TO SHADING TECHNIQUE



EXTENSION WORK

What you need to do:

1. SEARCH THE INTERNET, FOR AN EXAMPLE OF A PRODUCT, DRAWN IN TWO POINT PERSPECTIVE. PASTE YOUR EXAMPLE BELOW.

2. WHEN IS IT AN ADVANTAGE, TO DRAW IN TWO POINT PERSPECTIVE, COMPARED TO SINGLE POINT PERSPECTIVE?

You will need to print out this page, to complete the exercise. Click on the link, where it appears on this sheet, for guidance and samples.

INTRODUCTION TO TWO POINT PERSPECTIVE

C

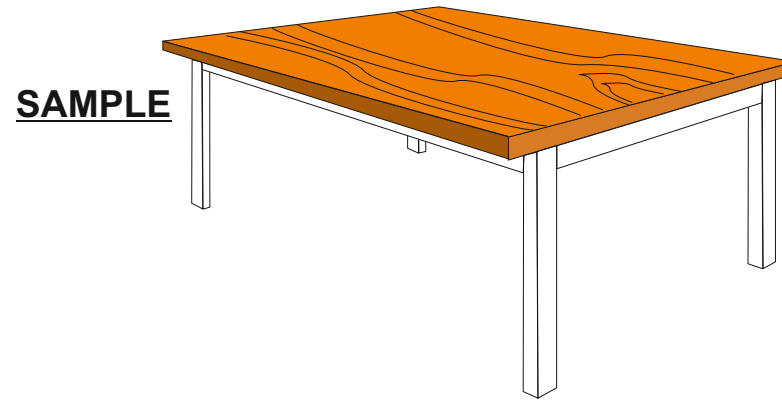
WORLD ASSOCIATION OF TECHNOLOGY TEACHERS <https://www.facebook.com/groups/254963448192823/> www.technologystudent.com © 2020 V.Ryan © 2020

EXERCISE 3

What you need to do:

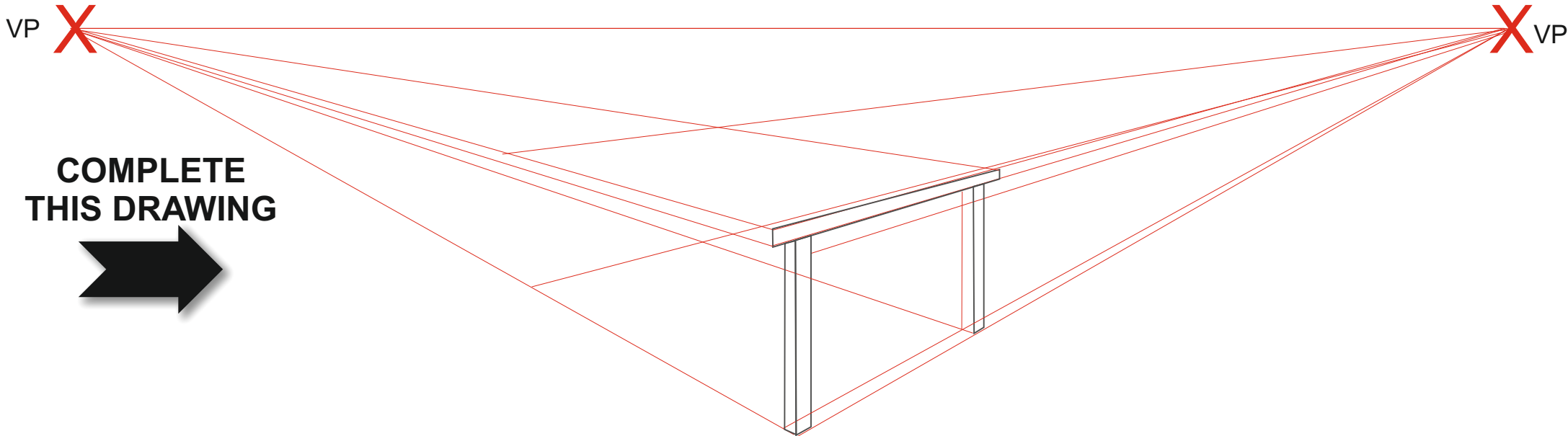
1. COMPLETE THE DRAWING OF THE TABLE SHOWN BELOW.
2. ADD SHADE / COLOUR TO THE SURFACES. THE COLOUR / SHADE SHOULD REFLECT THE MATERIAL, WHICH IS LIGHT BROWN MAHOGANY (NATURAL WOOD).
EXTENSION WORK: ADD STOOLS / CHAIRS, WITH APPROPRIATE COLOUR / SHADE.

Link 



LINK TO SHADING TECHNIQUE

Link 



You will need to print out this page, to complete the exercise. Click on the link, where it appears on this sheet, for guidance and samples.

INTRODUCTION TO TWO POINT PERSPECTIVE

D

WORLD ASSOCIATION OF TECHNOLOGY TEACHERS <https://www.facebook.com/groups/254963448192823/> www.technologystudent.com © 2020 V.Ryan © 2020

EXERCISE 4

What you need to do:

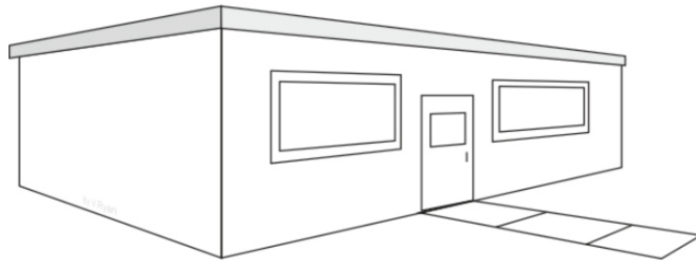
1. USING THE BASIC OUTLINE BELOW, COMPLETE THE DRAWING OF THE HOUSE, WITH A FLAT ROOF.

2. ADD DETAIL TO THE HOUSE. YOU MAY WISH TO INCLUDE; CURTAINS, DECORATIVE WINDOW FRAMES, DOOR PANELS, PLANTS IN THE GARDEN ETC...

Link



SIMPLE VERSION

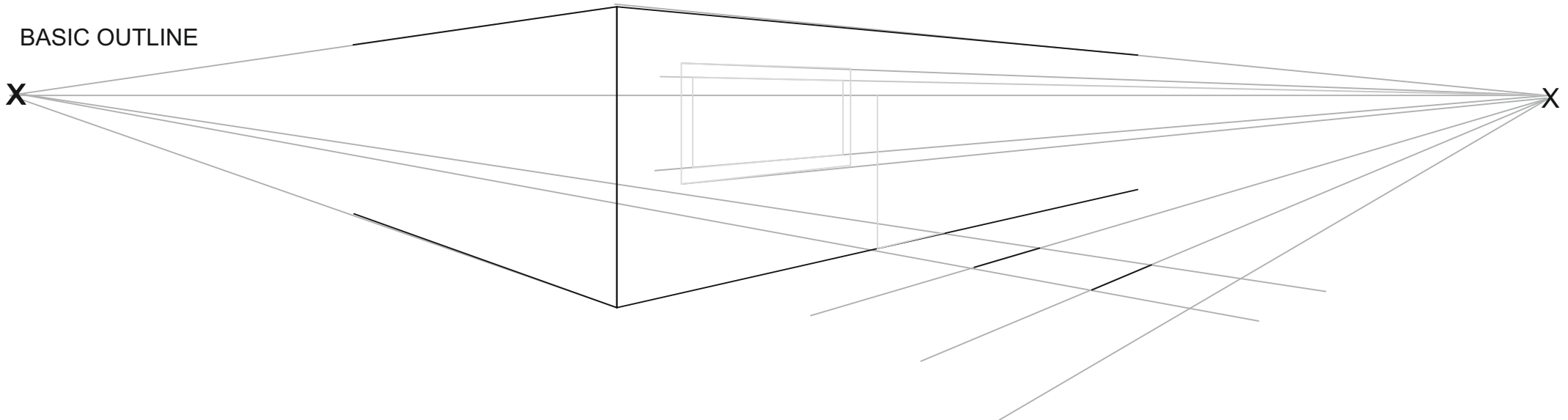


SAMPLES

DETAILED VERSION



BASIC OUTLINE



You will need to print out this page, to complete the exercise. Click on the link, where it appears on this sheet, for guidance and samples.

INTRODUCTION TO TWO POINT PERSPECTIVE

E

WORLD ASSOCIATION OF TECHNOLOGY TEACHERS <https://www.facebook.com/groups/254963448192823/> www.technologystudent.com © 2020 V.Ryan © 2020

EXERCISE 5

1. USING THE BASIC OUTLINE BELOW. COMPLETE THE DRAWING OF THE HOUSE, WITH A CONVENTIONAL ROOF.

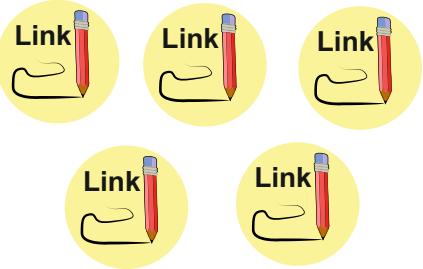
2. ADD DETAIL TO THE HOUSE.

YOU MUST INCLUDE; DRAIN PIPES AND GUTTERS, A CHIMNEY, TV ARIEL AND TILES TO THE ROOF.
EXTENSION WORK:
ADD - CURTAINS, DECORATIVE WINDOW FRAMES, DOOR PANELS, PLANTS IN THE GARDEN ETC...

What you need to do:

Link

LINKS TO SAMPLES



SAMPLE

