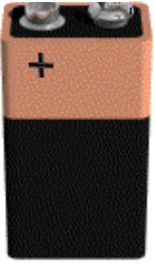


# ELECTRONICS - BASICS

V.Ryan © 2009-2022 World Association of Technology Teachers

**HELPFUL LINK:** <https://technologystudent.com/elec1/battery1.htm>



The battery shown opposite is normally of a particular voltage. What is it?

In the space below draw the symbol for a single cell battery.

VOLTAGE = \_\_\_\_\_

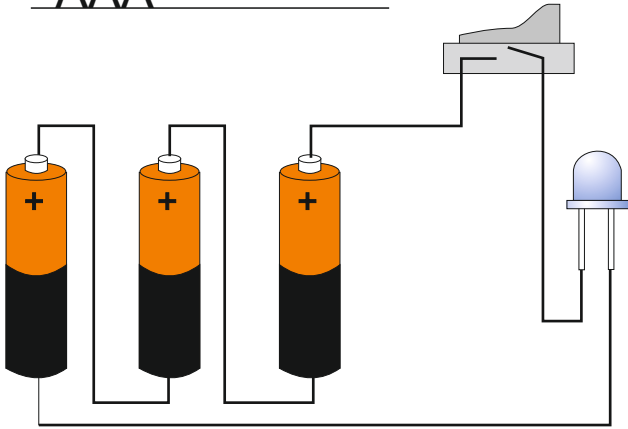


The batteries shown opposite are rated according to overall size. The small battery is generally known as AAA. Underneath the second battery print its size in terms of 'A's.

A battery inevitably needs replacing when its store of electricity is exhausted. What type of battery can be used again and again.

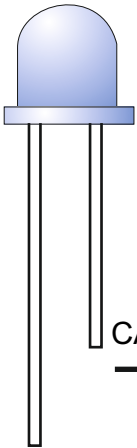
\_\_\_\_\_

\_\_\_\_\_  
AAA  
\_\_\_\_\_



The circuit opposite is composed of three 1.5 volt batteries. When the switch is pushed to 'on' what is likely to happen to the LED?

\_\_\_\_\_  
\_\_\_\_\_  
\_\_\_\_\_



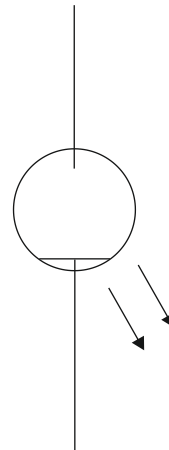
The LED shown opposite has one leg called a cathode (negative).

What is the opposite leg called?

\_\_\_\_\_

Is this leg positive or negative?

\_\_\_\_\_



Complete the symbol of an LED.

What is the full name of an LED?

L \_\_\_\_\_ E \_\_\_\_\_ D \_\_\_\_\_

What is normally the role of a resistor in an LED circuit?

\_\_\_\_\_  
\_\_\_\_\_

# ELECTRONICS - BASICS

V.Ryan © 2009-2022 World Association of Technology Teachers

HELPFUL LINK: <https://technologystudent.com/elec1/battery1.htm>

Add the missing labels to the diagram of a typical LED, shown below.

