

CIRCUITS IN PARALLEL

V.Ryan © 2009 World Association of Technology Teachers

HELPFUL LINK: <https://technologystudent.com/elec1/prcir1.htm>

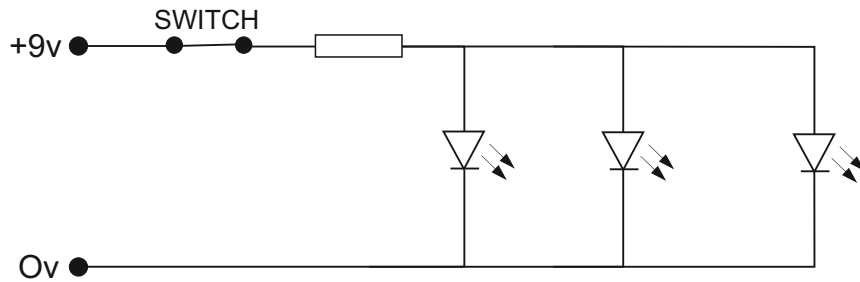
1. The circuit seen below has its components arranged opposite each other. What is this type of circuit known as? Underline the correct answer.

BACK TO BACK CIRCUIT

STAGE BY STAGE

PARALLEL CIRCUIT

SERIES CIRCUIT



Explain your choice of answer.

2. Add another LED to the circuit shown above - the completed circuit should have four LEDs.

3. When a fourth LED is added, what will happen to the brightness of all the LEDs? Explain your answer.

4. What will happen to the circuit if one of the LEDs fails?

5. Draw the same circuit as seen above, but this time use four LEDs.

6. Write two advantages of using LEDs instead of filament bulbs?
