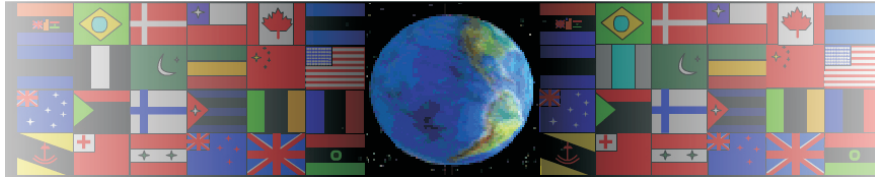


# HOUSE PLAN DESIGN

V.Ryan © 2000 - 2008

On behalf of The World Association of Technology Teachers

## W.A.T.T.



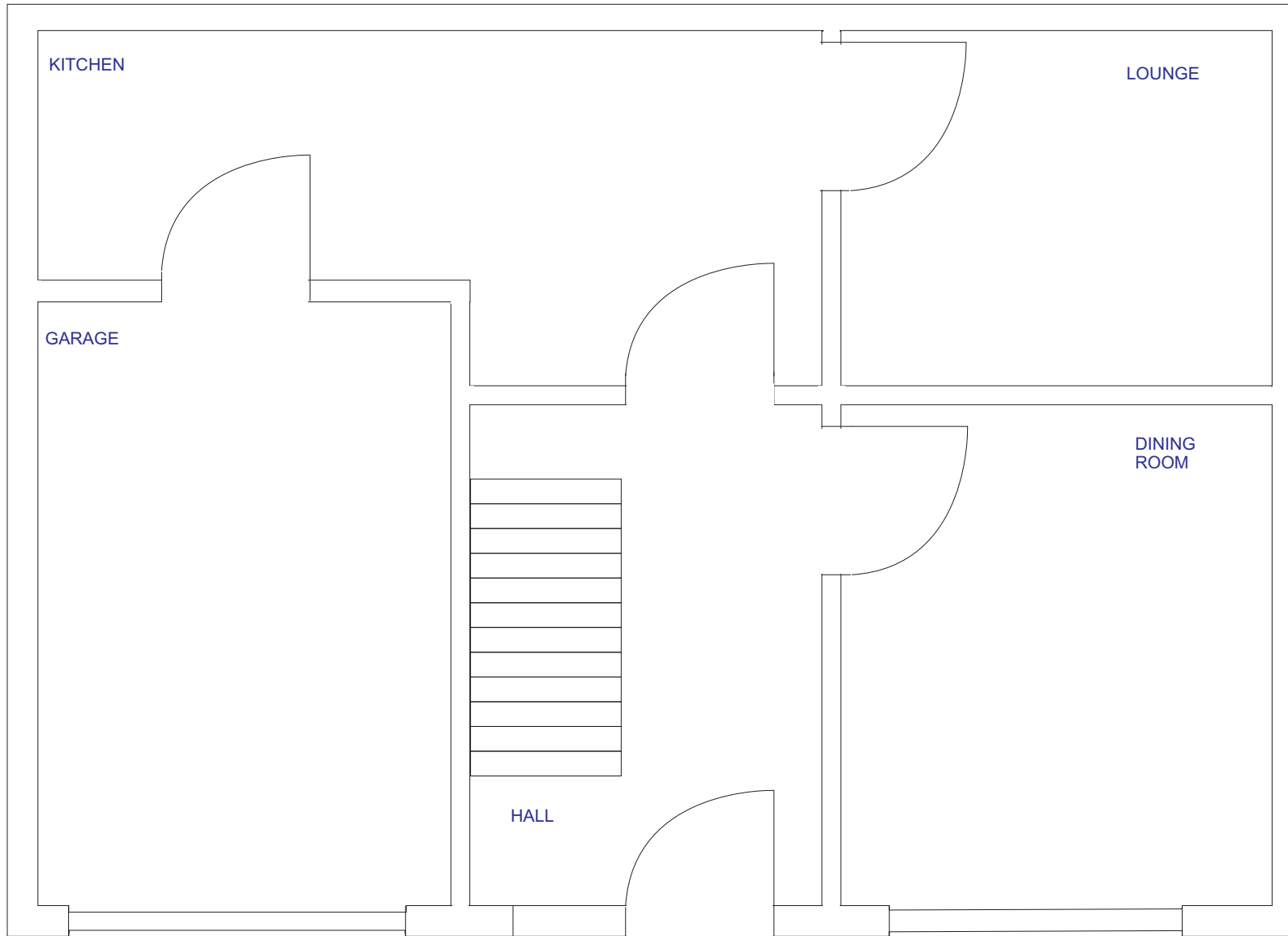
World Association of Technology Teachers

The 'House Plan Exercise' can be printed and used by teachers and students. It is recommended that you view the website section 'Graphics' ([www.technologystudent.com](http://www.technologystudent.com)) before attempting the design sheet .

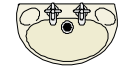
THESE MATERIALS CAN BE PRINTED AND USED BY TEACHERS AND STUDENTS.  
THEY MUST NOT BE EDITED IN ANY WAY OR PLACED ON ANY OTHER MEDIA INCLUDING WEB SITES AND INTRANETS.  
NOT FOR COMMERCIAL USE.  
THIS WORK IS PROTECTED BY COPYRIGHT LAW.  
IT IS ILLEGAL TO DISPLAY THIS WORK ON ANY WEBSITE/MEDIA STORAGE OTHER THAN [www.technologystudent.com](http://www.technologystudent.com)

# PLAN VIEW EXERCISE

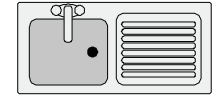
The plan view below is based on a typical first floor of a detached house. Complete the drawing by adding suitable furniture and units. Also, add a key so that each piece of furniture and units etc..can be identified.



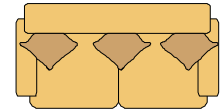
## KEY



BATHROOM SINK UNIT



KITCHEN SINK UNIT



SETTEE

NAME

TITLE

DATE

# EXAMINATION QUESTION

Using your two point perspective drawing of a bungalow, draw a plan view showing all the rooms. Include: internal walls /divides, furniture and fittings, appropriate labels, limited colour /shade and other details you feel are important.

# KEY

**NAME**

**TITLE**

**DATE**