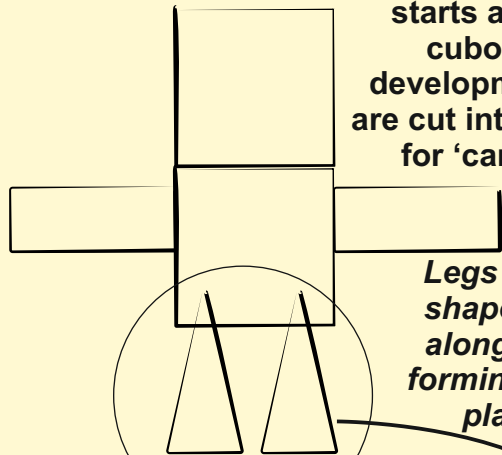


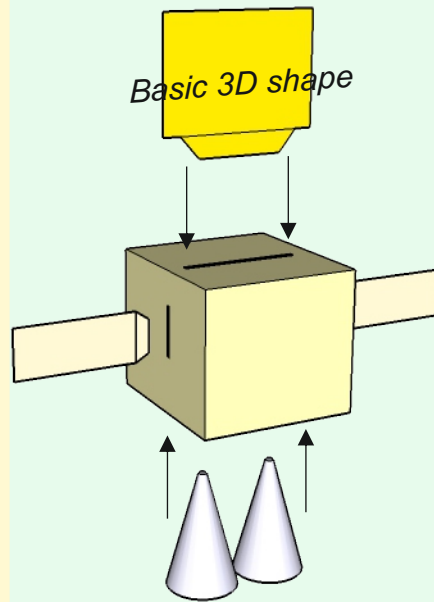
FANTASY PAPER TOY CHARACTERS - BASIC DESIGN

This fantasy character starts as a basic cuboid net / development. Slots are cut into the sides, for 'card' arms.



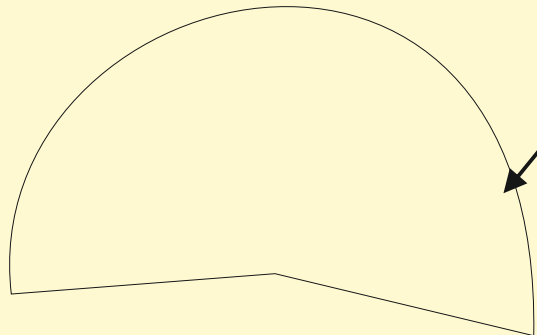
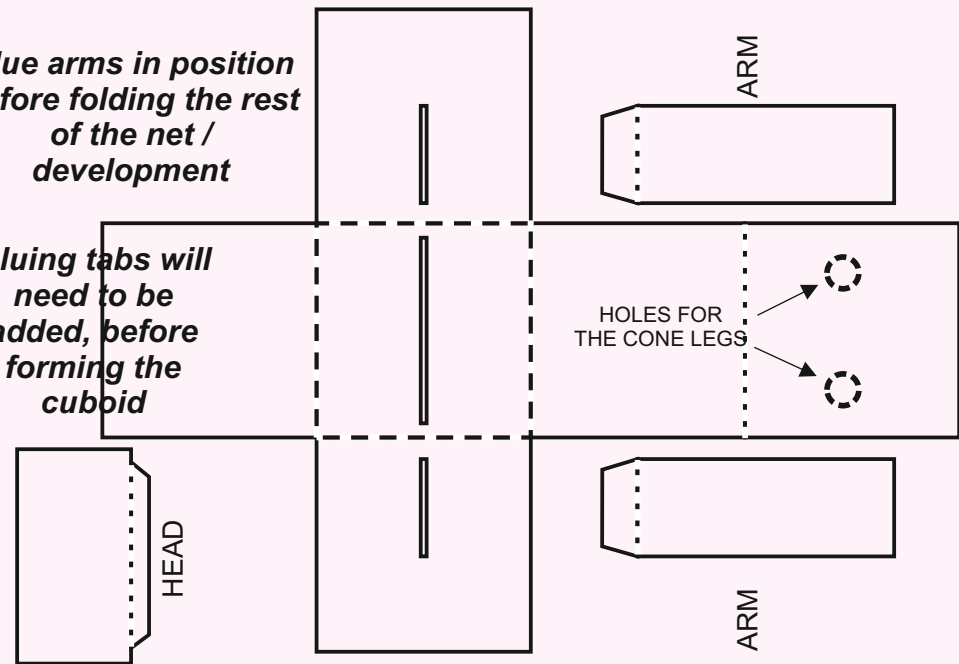
Legs are cone shapes, glued along a seam, forming a stable platform.

Basic 3D shape



Glue arms in position before folding the rest of the net / development

Gluing tabs will need to be added, before forming the cuboid

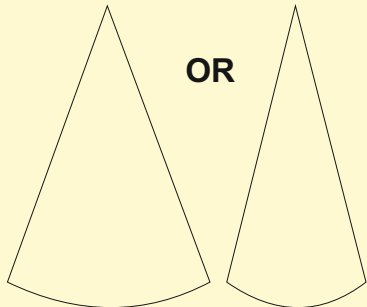


Decoration in the form of images / drawings can be added to produce a fantasy character.

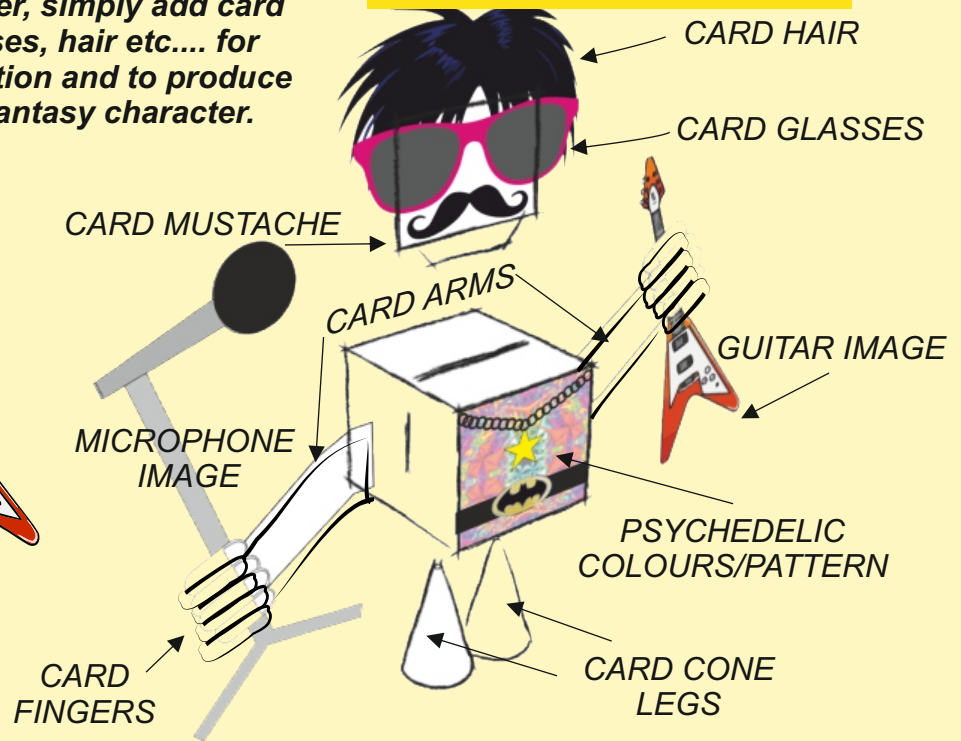
When the cuboid body, head arms and cone legs are glued together, simply add card glasses, hair etc.... for decoration and to produce the fantasy character.

TRY THE GRAPHICS SECTION OF www.technologystudent.com for detailed revision materials

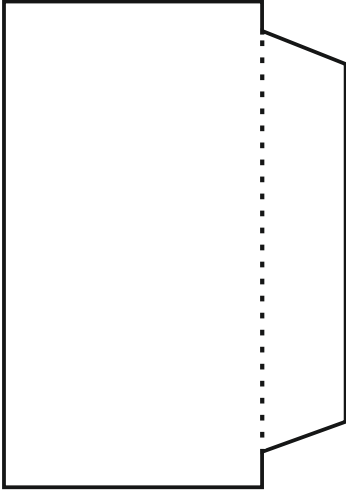
Overlap the cone and glue the excess, producing the width of base/circle, you want to achieve.



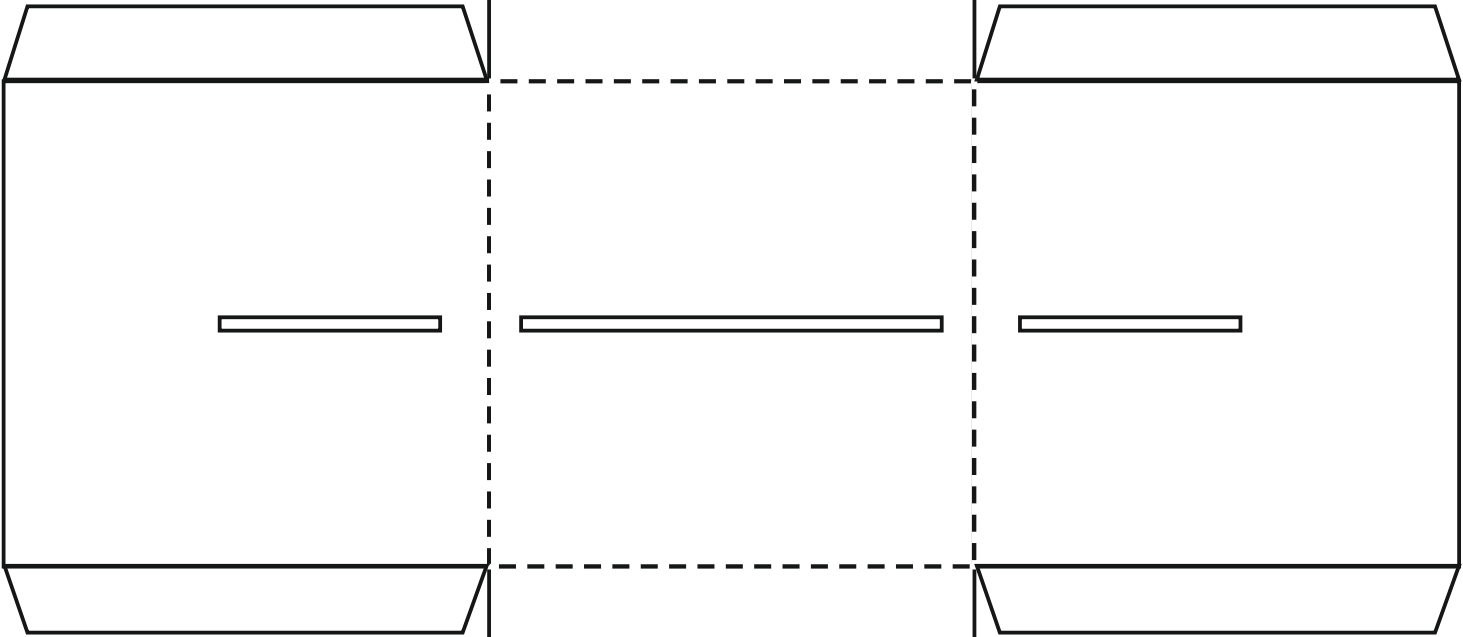
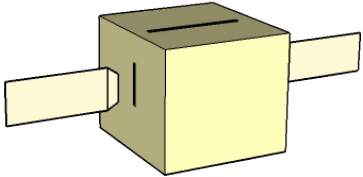
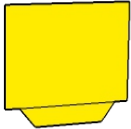
The arms can be shaped to your own design



FANTASY PAPER TOY CHARACTERS.



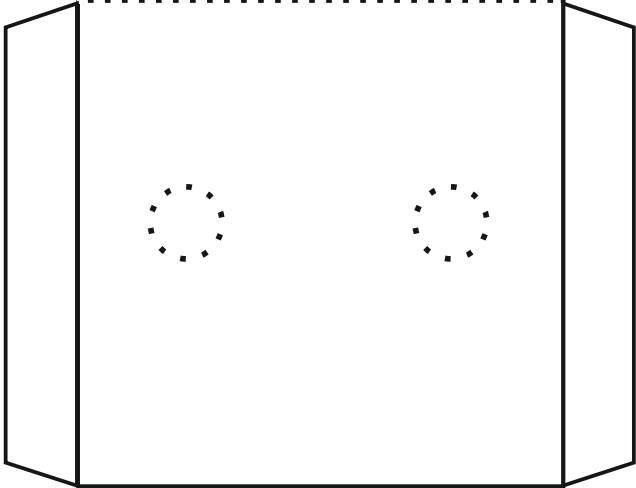
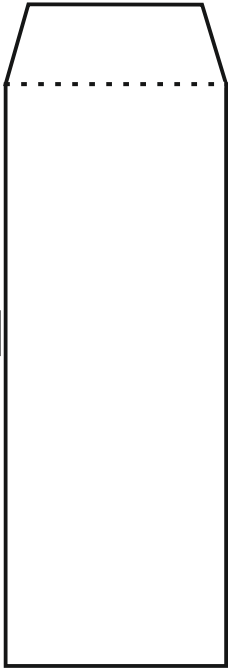
HEAD



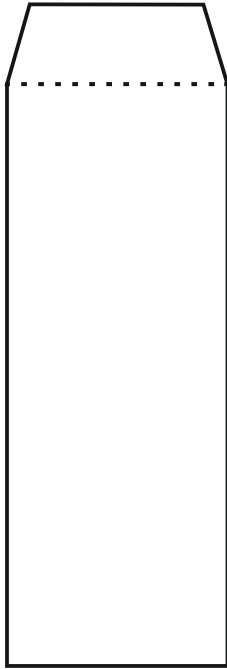
DESIGN YOUR OWN ARM SHAPES

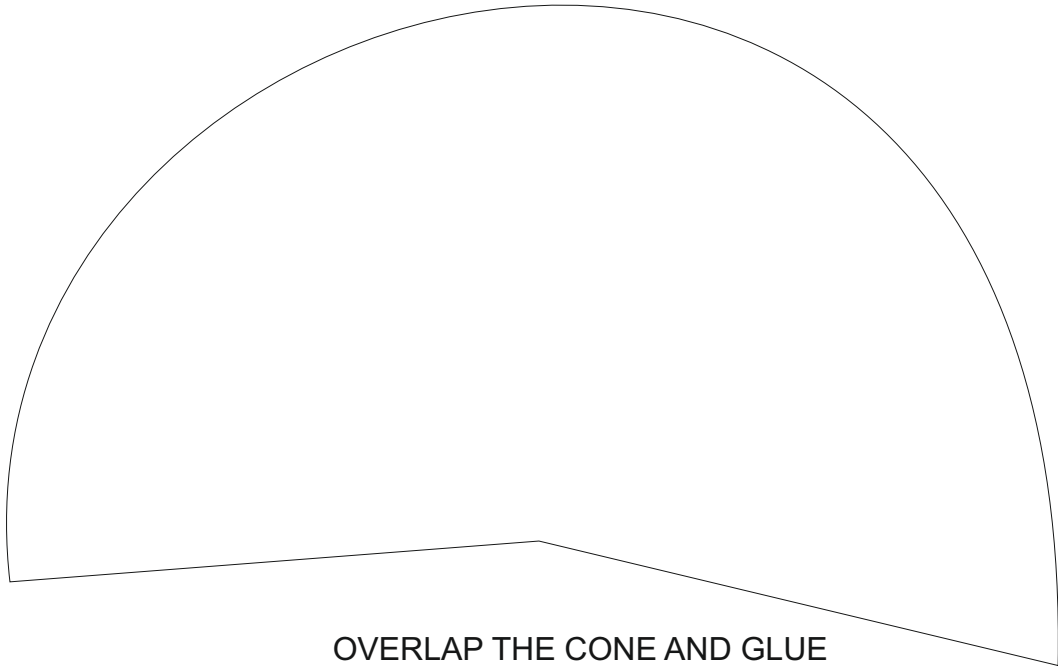
GLUE ARMS IN POSITION BEFORE FOLDING THE REST OF THE NET / DEVELOPMENT

ARM



ARM





OVERLAP THE CONE AND GLUE
THE EXCESS, PRODUCING THE
WIDTH OF BASE/CIRCLE YOU
WANT TO ACHIEVE.

