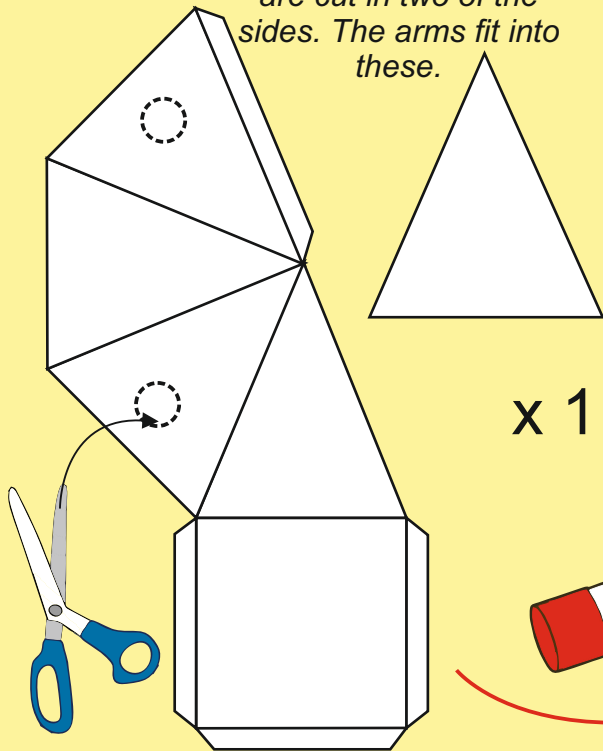


# FANTASY PAPER TOY CHARACTERS - SQUARE PYRAMIDS

WORLD ASSOCIATION OF TECHNOLOGY TEACHERS <https://www.facebook.com/groups/254963448192823/> [www.technologystudent.com](http://www.technologystudent.com) © 2017 V.Ryan © 2017

1

The main body is a square pyramid. Holes are cut in two of the sides. The arms fit into these.



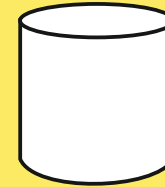
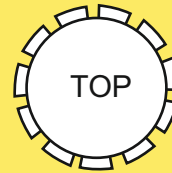
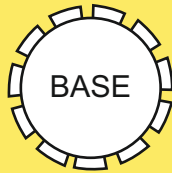
x 1

2

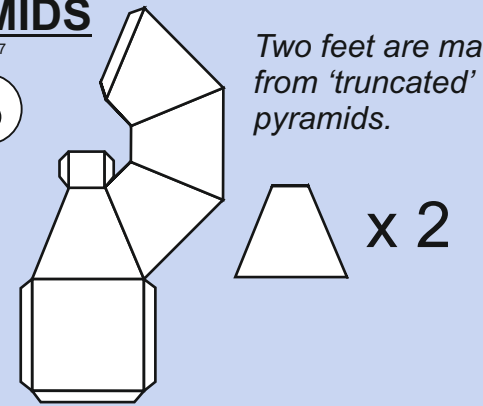


x 1

The head is a cylinder, with a base and top



3

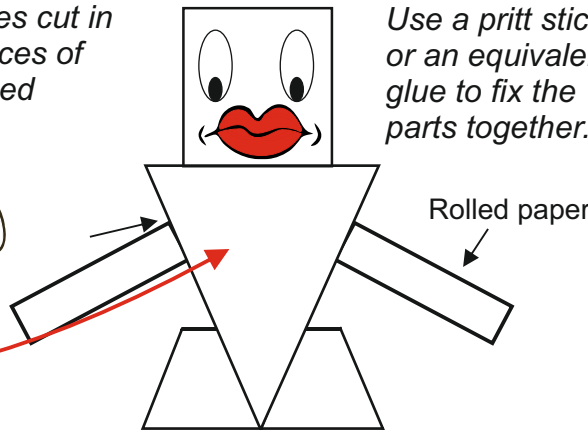


Two feet are made from 'truncated' pyramids.

x 2

Arms holes cut in two surfaces of the inverted pyramid

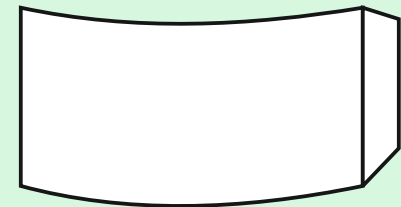
Use a pritt stick or an equivalent glue to fix the parts together.



4

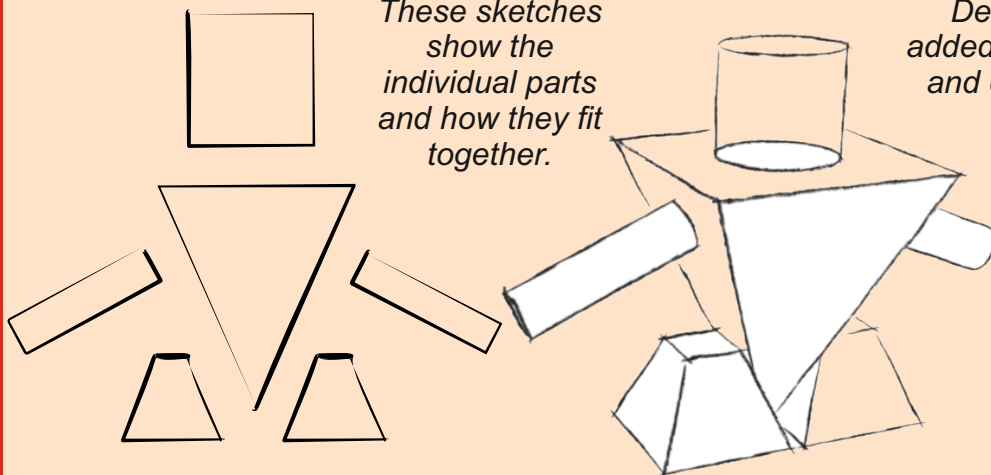
x 2

Each arm is a cylinder of paper, rolled and glued with the tab.

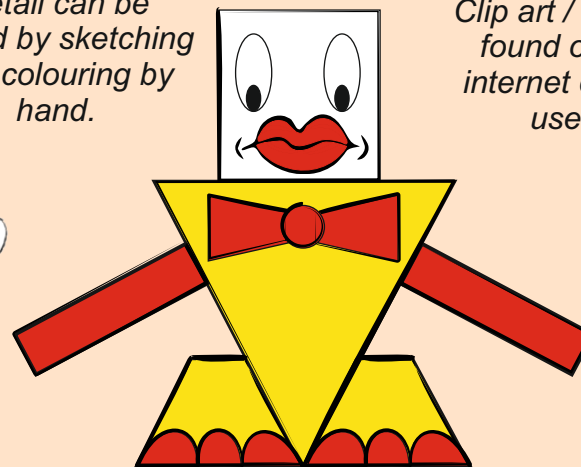


TRY THE GRAPHICS SECTION OF [www.technologystudent.com](http://www.technologystudent.com) for detailed revision materials

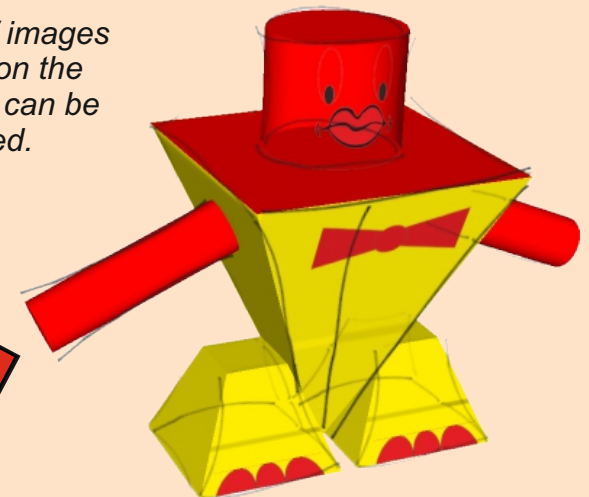
These sketches show the individual parts and how they fit together.



Detail can be added by sketching and colouring by hand.

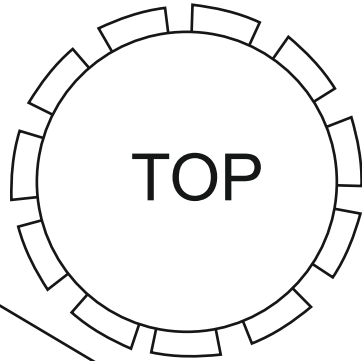


Clip art / images found on the internet can be used.

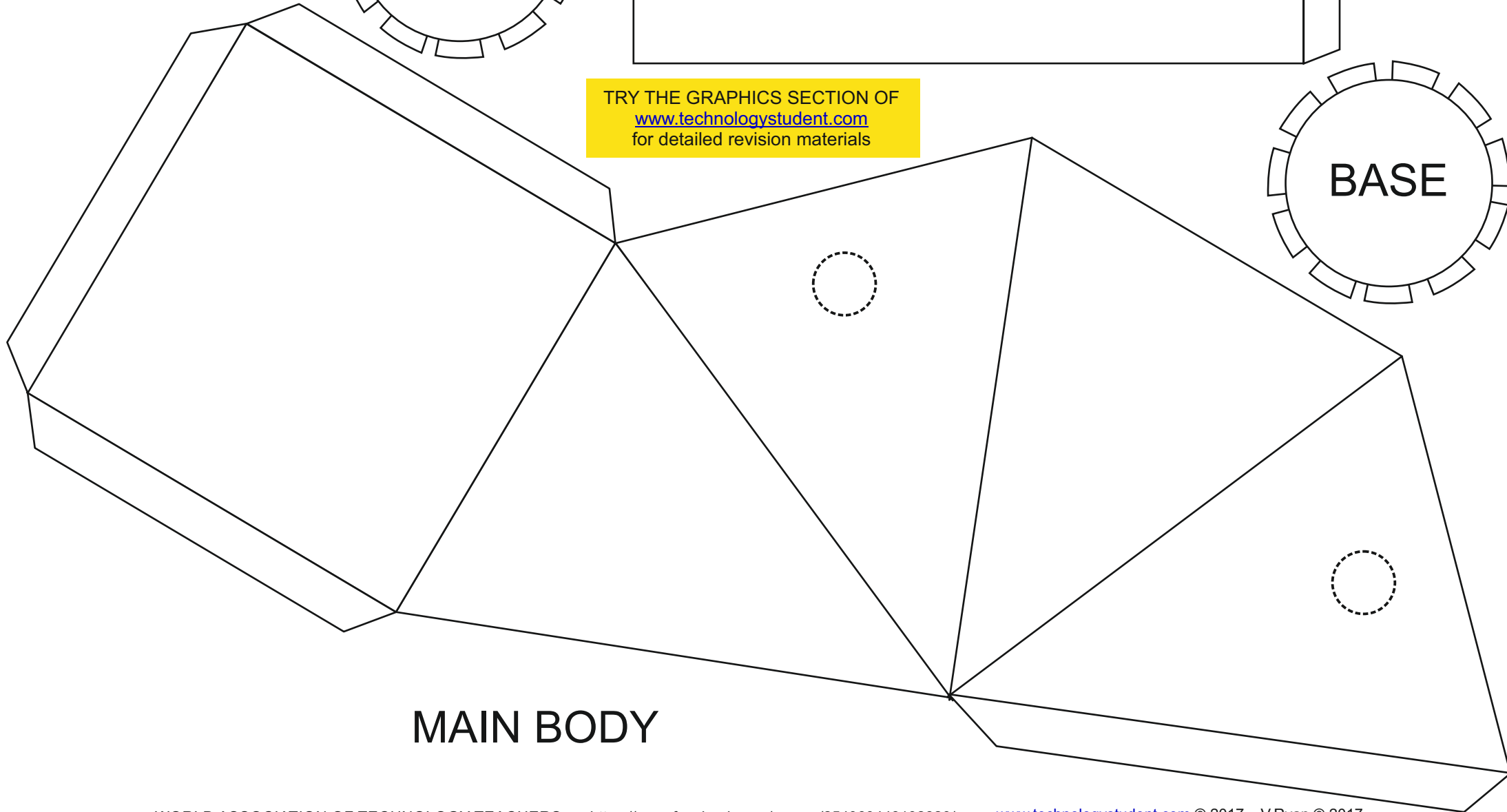
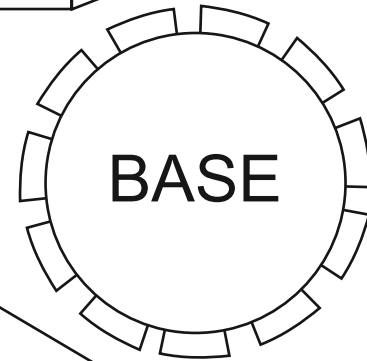


# DESIGN 3 - PARTS SHEET 1

HEAD



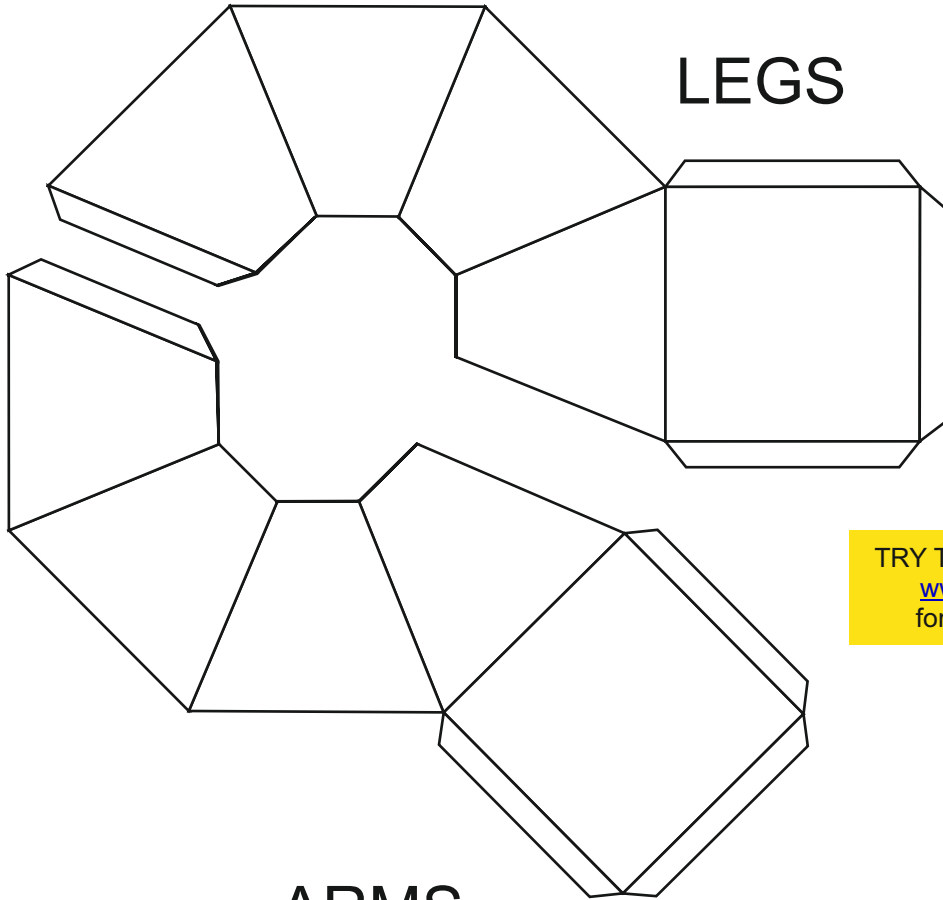
TRY THE GRAPHICS SECTION OF  
[www.technologystudent.com](http://www.technologystudent.com)  
for detailed revision materials



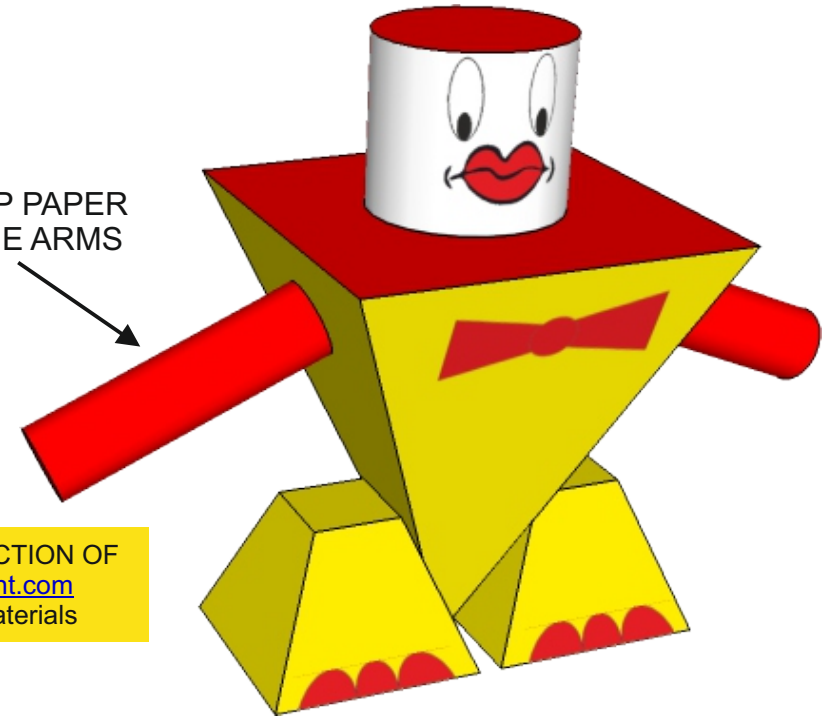
MAIN BODY

# DESIGN 3 - PARTS SHEET 2

## LEGS

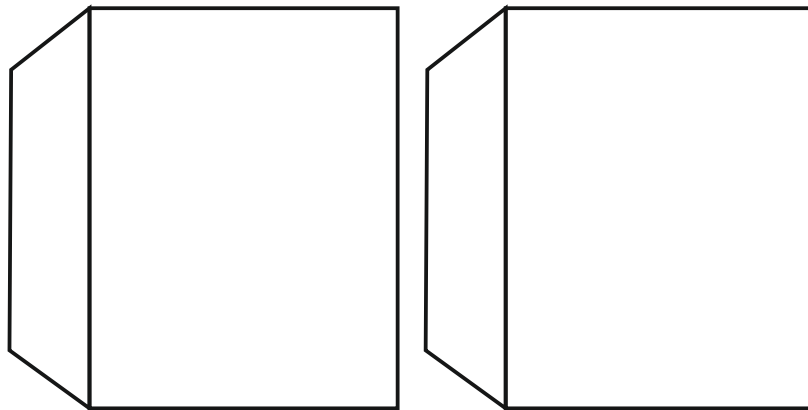


ROLL UP PAPER FOR THE ARMS



TRY THE GRAPHICS SECTION OF [www.technologystudent.com](http://www.technologystudent.com) for detailed revision materials

## ARMS



## REQUIRED EQUIPMENT

