

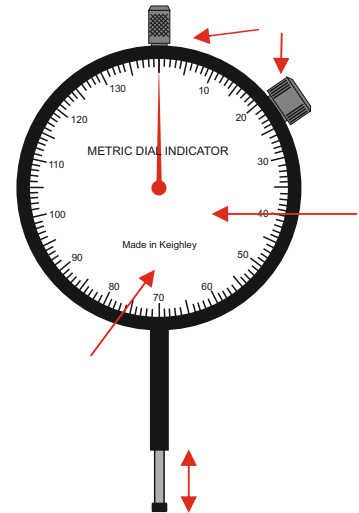
EXAMINATION QUESTIONS - ENGINEERS DIAL INDICATOR(GAUGE)

HELPFUL LINKS:

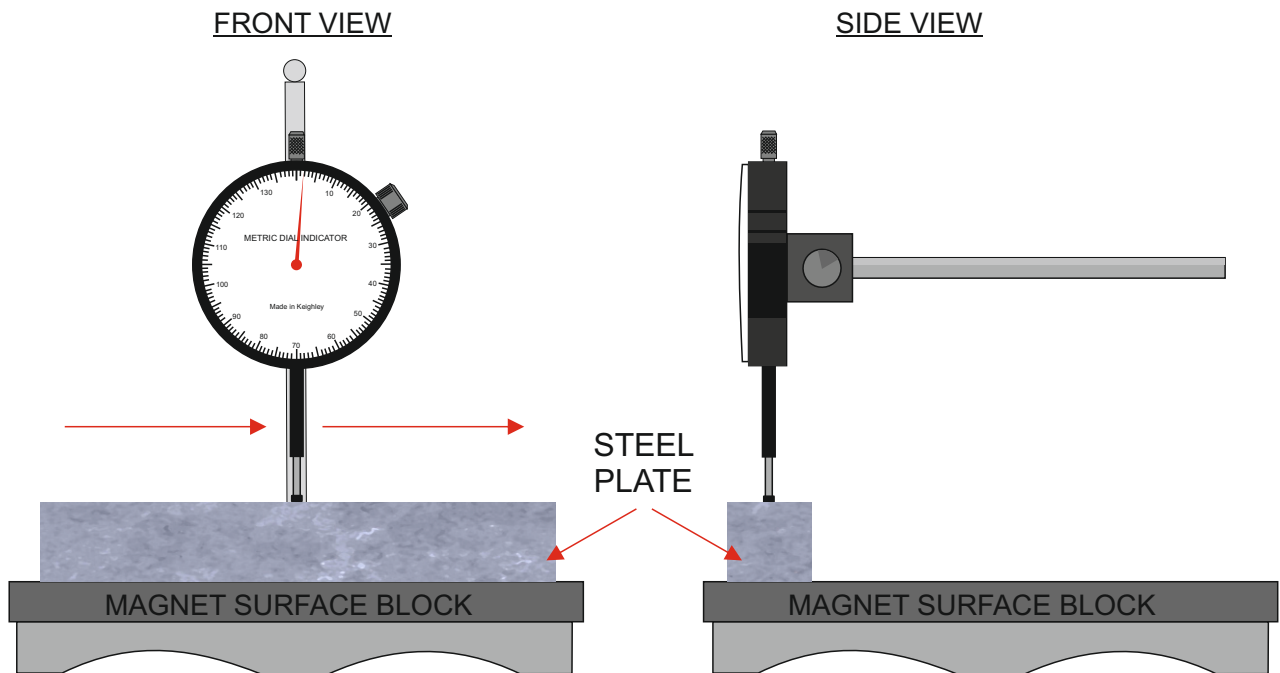
http://www.technologystudent.com/equip_fish/indicator1.html

1. What are Dial Indicators ? **3 marks**

2. Label / name the parts of the dial indicator, identified by the arrows.
4 marks



3a. The Dial Indicator is being used to test / check that the surface of the steel plate is parallel.
Complete the side view, adding and labelling the missing parts. **5 marks**



3b. Explain how the dial indicator is used to test / check the surface of the 'steel plate', shown in the diagram above. **3 marks**
