

BLOW MOULDING

V.Ryan © 2000 - 2009

On behalf of The World Association of Technology Teachers

W.A.T.T.



World Association of Technology Teachers

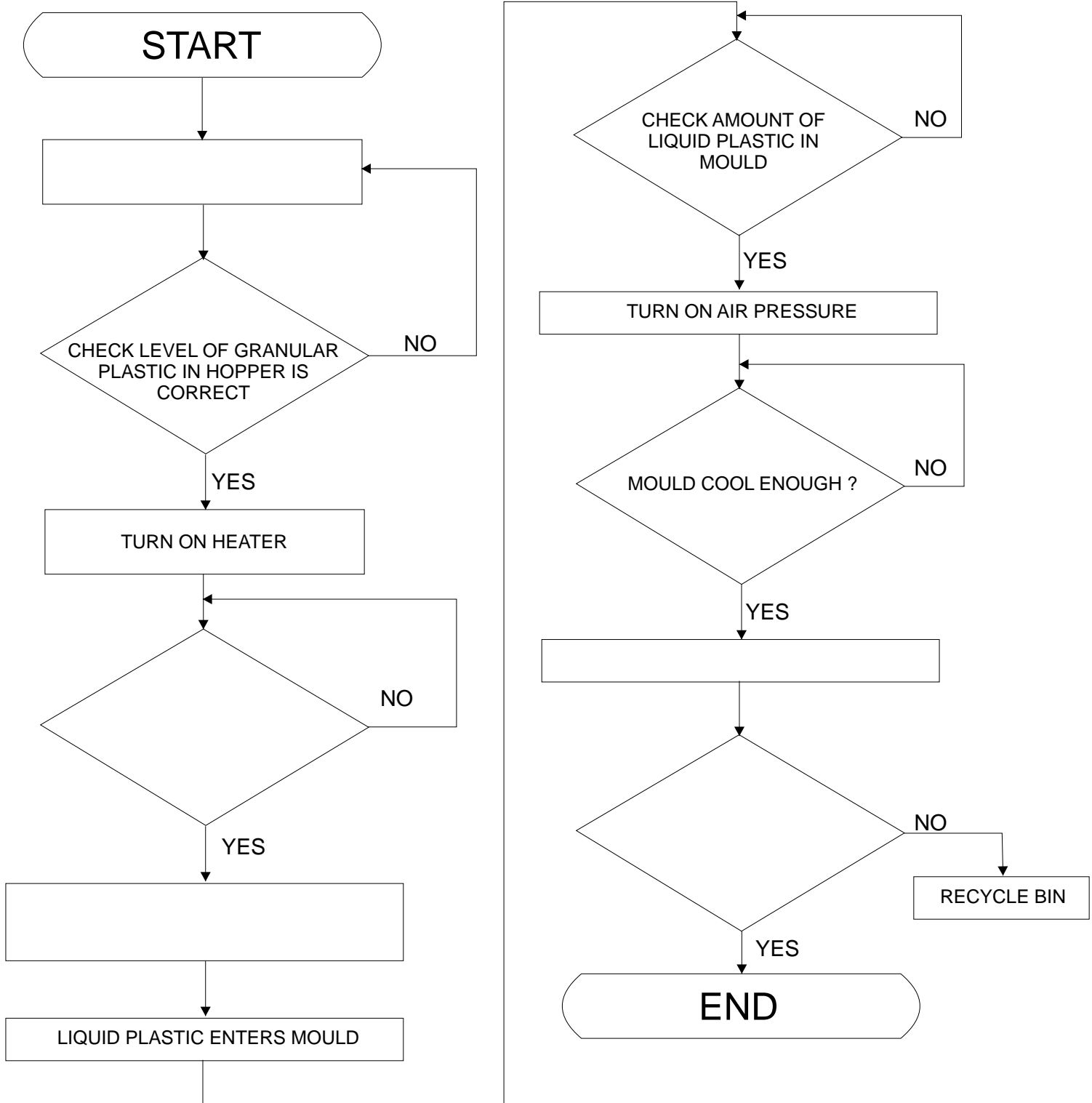
This exercise can be printed and used by teachers and students. It is recommended that you view the website (www.technologystudent.com) before attempting the design sheet .

THESE MATERIALS CAN BE PRINTED AND USED BY TEACHERS AND STUDENTS.
THEY MUST NOT BE EDITED IN ANY WAY OR PLACED ON ANY OTHER MEDIA INCLUDING WEB SITES AND INTRANETS.
NOT FOR COMMERCIAL USE.
THIS WORK IS PROTECTED BY COPYRIGHT LAW.
IT IS ILLEGAL TO DISPLAY THIS WORK ON ANY WEBSITE/MEDIA STORAGE OTHER THAN www.technologystudent.com

FORMING PLASTICS THROUGH INJECTION MOULDING / BLOW MOULDING - FLOW CHART

V.Ryan © 2009 World Association of Technology Teachers

2. The flowchart below represents the stage of injection moulding. Add the missing words / phrases.



3. Explain why recycling is important

4. Draw a suitable recycling logo in the space below.

ATYPICAL RECYCLING SYMBOL