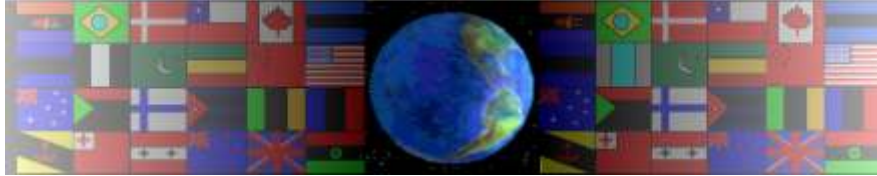


THE CENTRE LATHE

V.Ryan © 2000 - 2009

On behalf of The World Association of Technology Teachers

W.A.T.T.



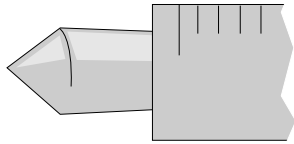
World Association of Technology Teachers

This exercise can be printed and used by teachers and students. It is recommended that you view the website (www.technologystudent.com) before attempting the design sheet .

THESE MATERIALS CAN BE PRINTED AND USED BY TEACHERS AND STUDENTS.
THEY MUST NOT BE EDITED IN ANY WAY OR PLACED ON ANY OTHER MEDIA INCLUDING WEB SITES AND INTRANETS.
NOT FOR COMMERCIAL USE.
THIS WORK IS PROTECTED BY COPYRIGHT LAW.
IT IS ILLEGAL TO DISPLAY THIS WORK ON ANY WEBSITE/MEDIA STORAGE OTHER THAN www.technologystudent.com

HOW TO CENTRE THE CUTTING TOOL

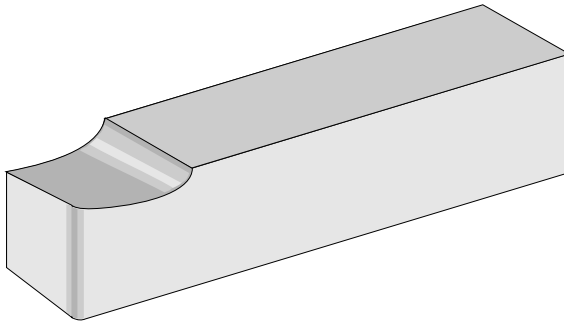
V.Ryan © 2009 World Association of Technology Teachers



1. The drawing opposite shows the tailstock centre. Draw a lathe cutting tool in the position normally associated with checking for 'centre height'

2. Why is it important to centre the cutting tool before any turning takes place?

LATHE TOOLS



3. A typical cutting tool is shown opposite.

Label the following parts with the titles below.

- HEEL SHANK MAJOR CUTTING EDGE
- CUTTING PART MINOR CUTTING EDGE

4. In the space below draw and label a typical tool holder, with a cutting tool in position.

5. Name each of the lathe tools drawn below.

