

ARCHITECTURAL VIEWS AND PLANS

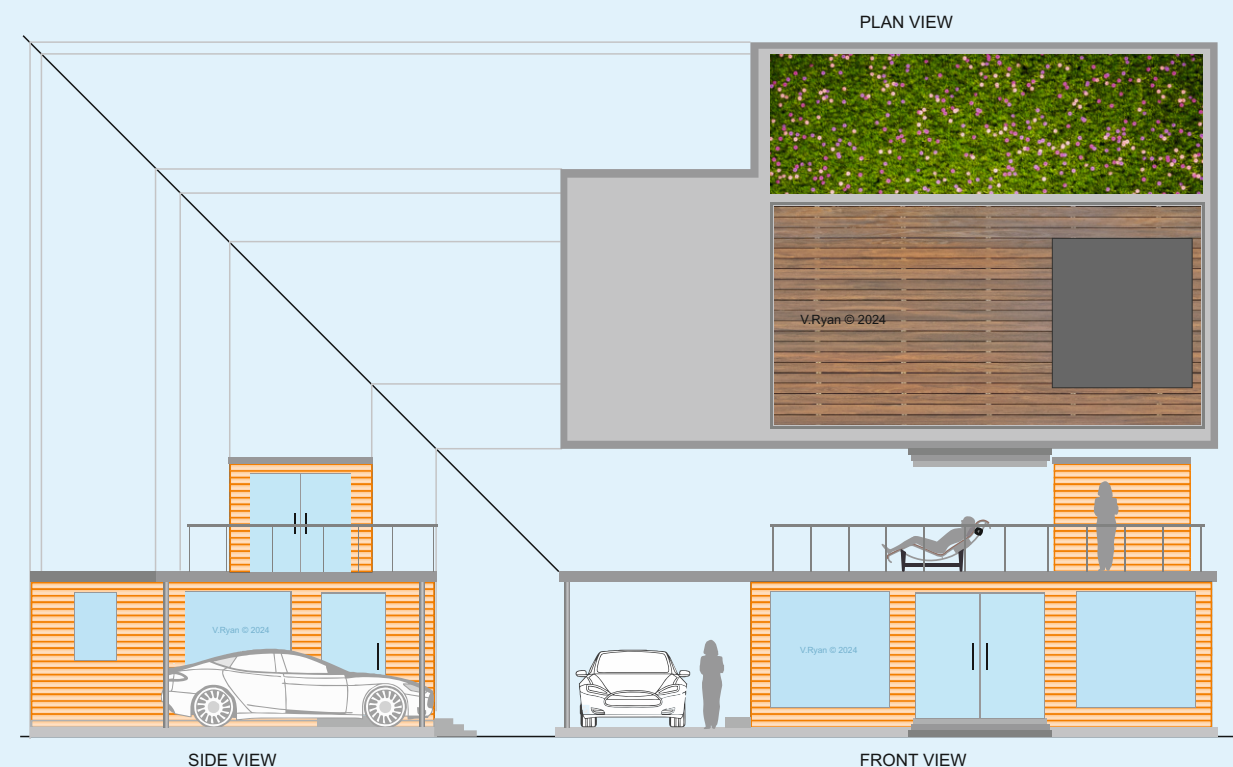
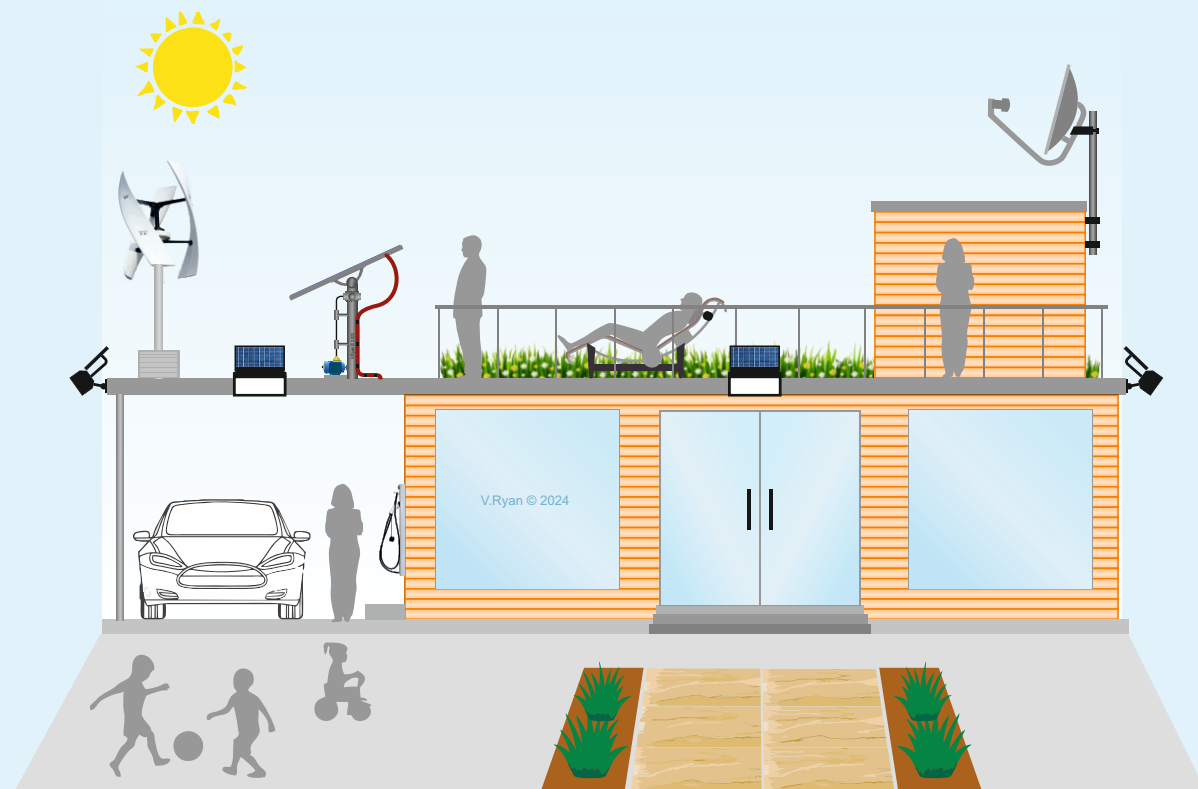
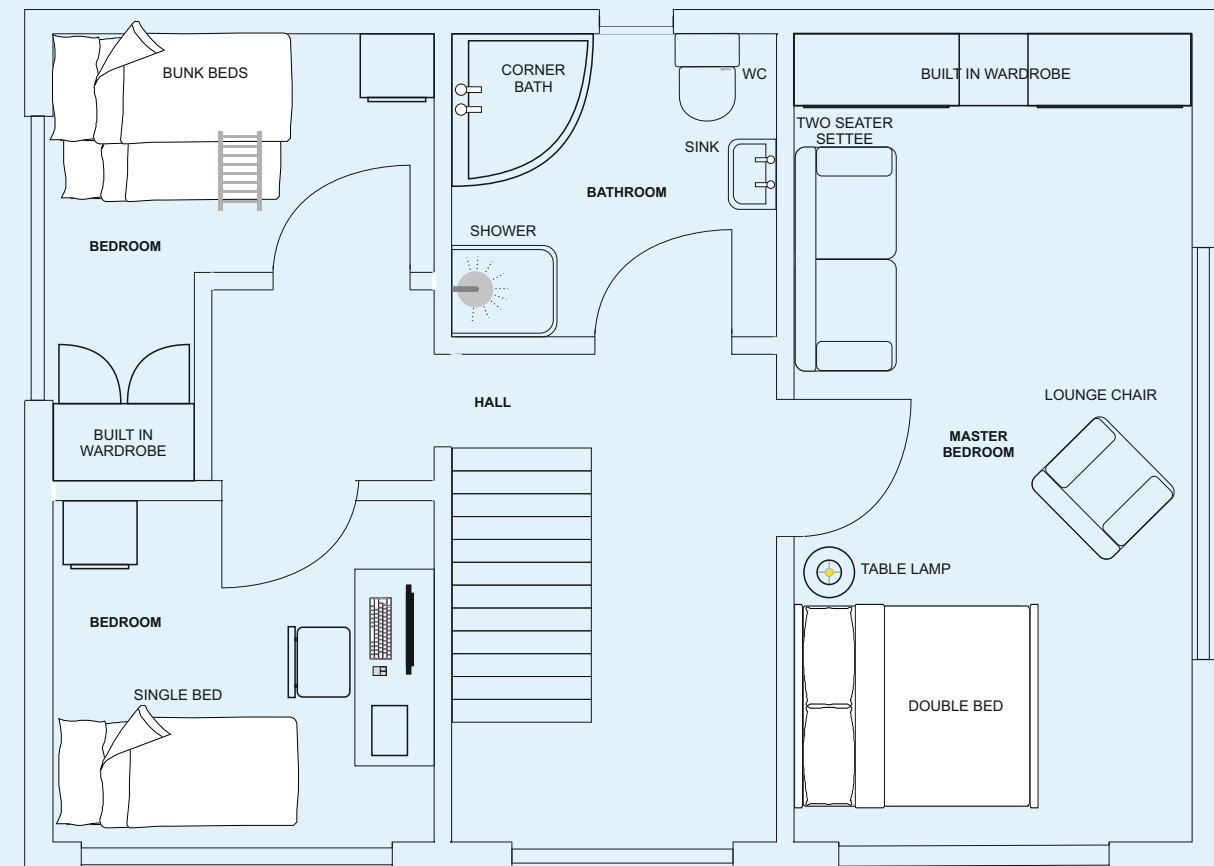
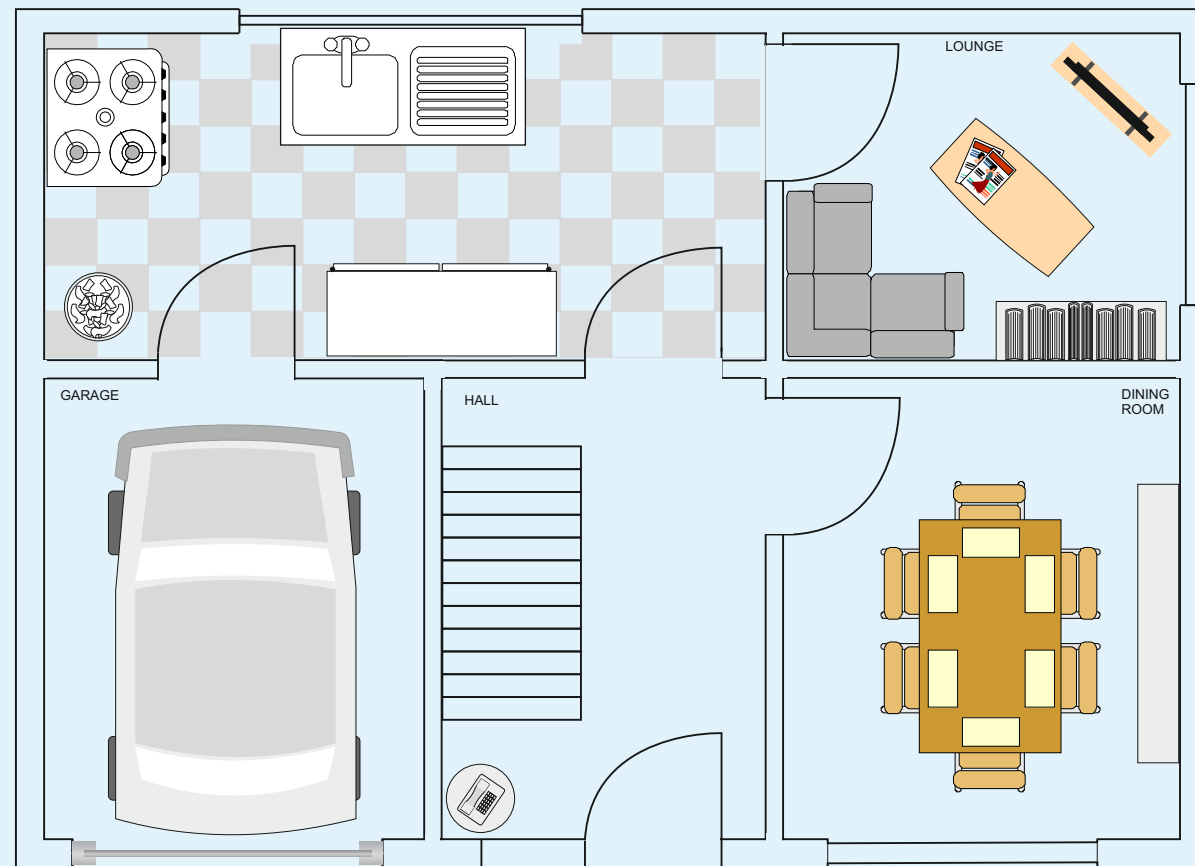
WORLD ASSOCIATION OF TECHNOLOGY TEACHERS

<https://www.facebook.com/groups/254963448192823/>

technologystudent.com © 2024

V.Ryan © 2024

EXERCISES



WORLD ASSOCIATION OF TECHNOLOGY TEACHERS

<https://www.facebook.com/groups/254963448192823/>

technologystudent.com © 2024

V.Ryan © 2024

RESEARCH DIFFERENT ARCHITECTURAL STYLES OF HOMES. PASTE THE STYLES / IMAGES THAT YOU LIKE ON THIS SHEET. NAME EACH STYLE.

**NAMES OF SOME
HOUSE STYLES**

MODERNIST

HUF HOUSE

GOTHIC RIVAL

COTTAGE HOUSE STYLE

BARN STYLE HOUSE

TUDOR

GEORGIAN

MODULAR HOME

ARTS AND CRAFTS

TOWN HOUSE

HELPFUL LINK: <https://technologystudent.com/despro2/architec2.html>

HELPFUL LINK



NAME AND DESCRIBE THE FEATURES OF EACH STYLE OF HOME THAT YOU RESEARCHED ON THE PREVIOUS SHEET



THE DESIGN TASK - INITIAL RESEARCH

You are to design the arrangement of furniture, fixtures and fittings of a typical detached house. The house has two floors with the dining room, kitchen and lounge downstairs. Bedrooms and bathroom upstairs.

The sample key shows how a variety of furniture, fixtures and fittings look as a plan view (birds eye view). You can use examples from the key or develop your own designs. Think carefully about the style of furniture, fixtures and fittings.

Keep in mind, that there are certain pieces of furniture, fixtures and fittings that are essential in any house. **List some that you think are essential:**

_____	_____
_____	_____
_____	_____
_____	_____

Houses are very expensive in this location. It is said that a house is the most expensive single item a person / couple will ever buy.

Write down what you consider to be the price of the house seen below.

PRICE: _____



FRONT



BACK

Would you prefer to own a detached house in a residential area (a housing estate) or a small flat in an exclusive riverside location? Explain your answer.

HELPFUL LINK



HELPFUL LINK: <https://technologystudent.com/despro2/architec3.html>

EXPLAIN THE KEY TERMS LISTED BELOW

RENT

LEASE

ARCHITECT

HOUSE

FLAT

REPOSSESSION

ROOF

SUBSIDENCE

SURVEY

ADDRESS

KITCHEN

DOOR

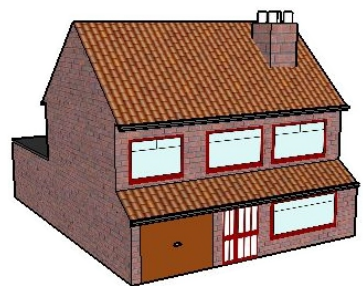
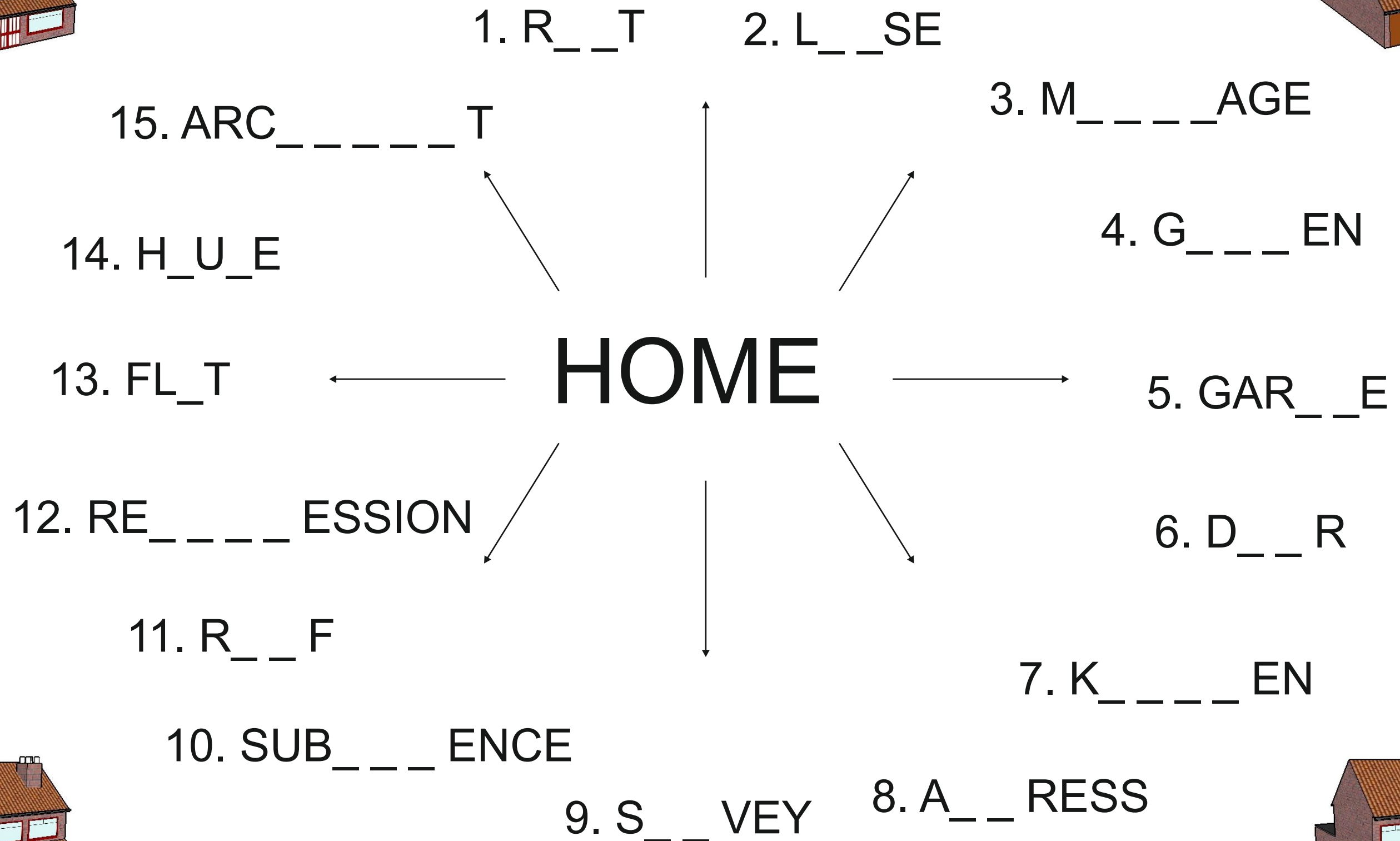
GARAGE

GARDEN

MORTGAGE

ALL THE INCOMPLETE WORDS BELOW ARE ASSOCIATED WITH BUYING OR OWNING A HOUSE. FILL IN THE MISSING LETTERS.

You can refer to the list of Key Terms.



HELPFUL LINK:



TASK - ARCHITECTURAL PLANS - PLAN / LAYOUT

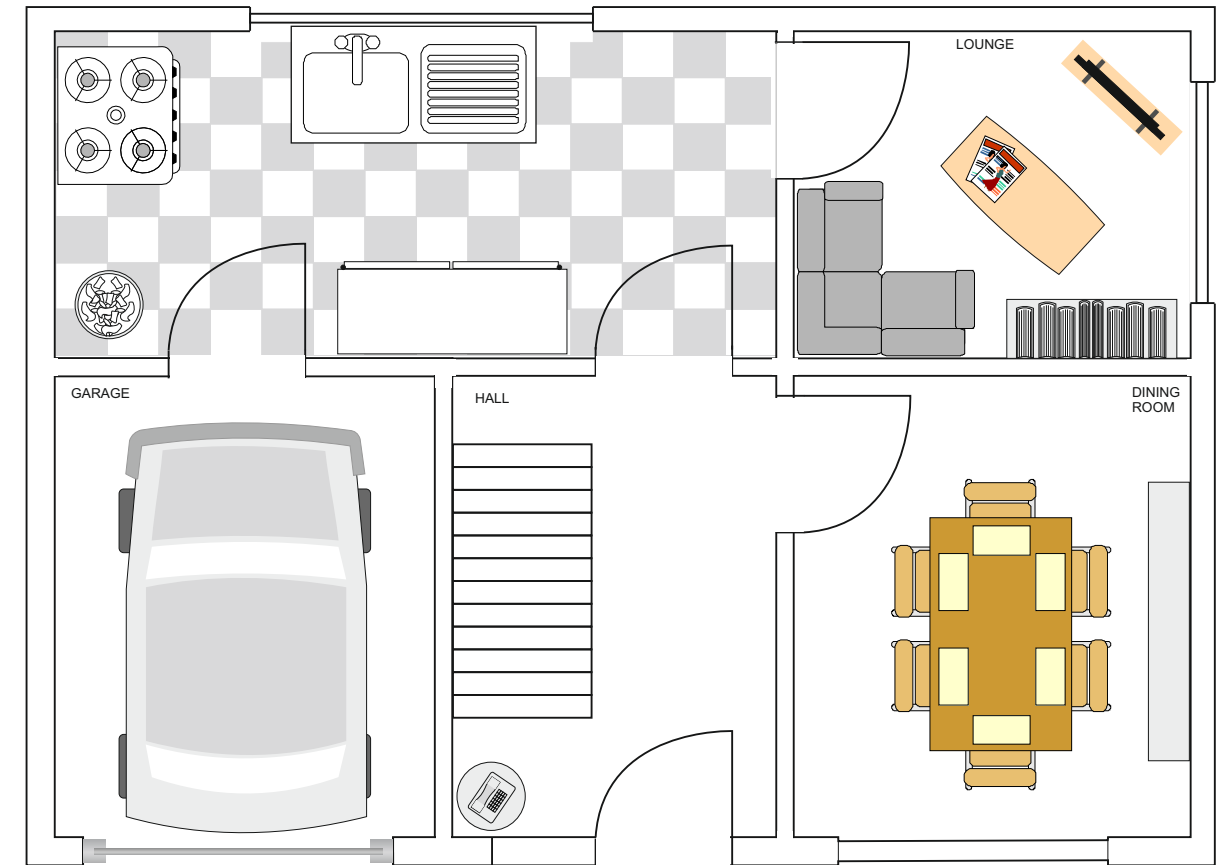
THE DESIGN TASK

You are to design the arrangement of furniture, fixtures and fittings of a typical detached house. The house has two floors with the dining room, kitchen and lounge downstairs. Bedrooms and bathroom upstairs. The sample key shows how a variety of furniture, fixtures and fittings look as a plan view (birds eye view). You can use examples from the key or develop your own designs. Think carefully about the style of furniture, fixtures and fittings. Keep in mind, that there are certain pieces of furniture, fixtures and fittings that are essential in any house.



SAMPLE LAYOUTS

SAMPLE - GROUND FLOOR / FIRST FLOOR



SECOND FLOOR / UPSTAIRS

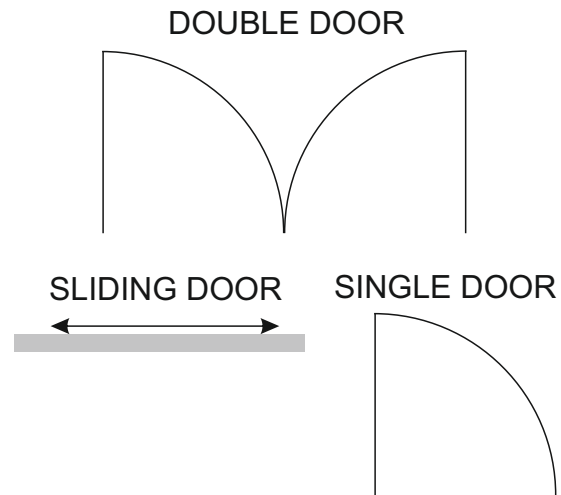


HELPFUL LINK

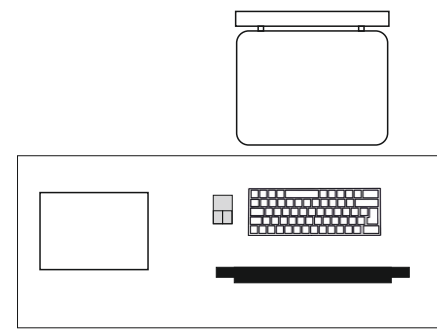


HELPFUL LINK: <https://technologystudent.com/despro2/architec4.html>

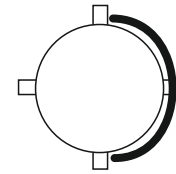
ARCHITECTURAL PLANS - SAMPLE KEY FOR FURNITURE / FITTINGS / GARDEN



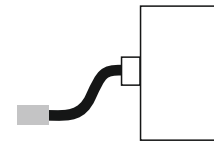
COMPUTER DESK AND CHAIR



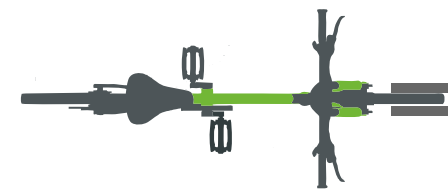
BAR STOOL



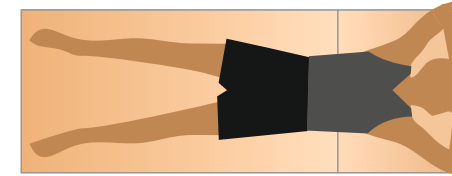
ELECTRIC CHARGING POINT



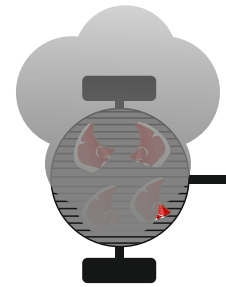
BICYCLE AND STAND



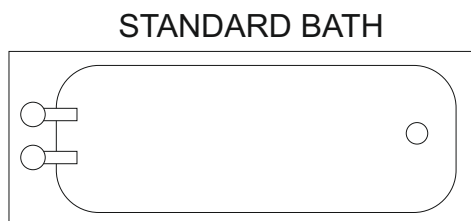
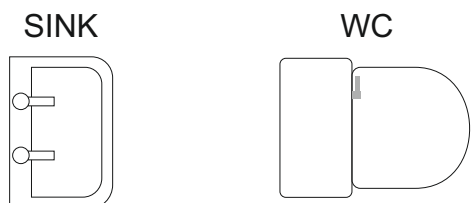
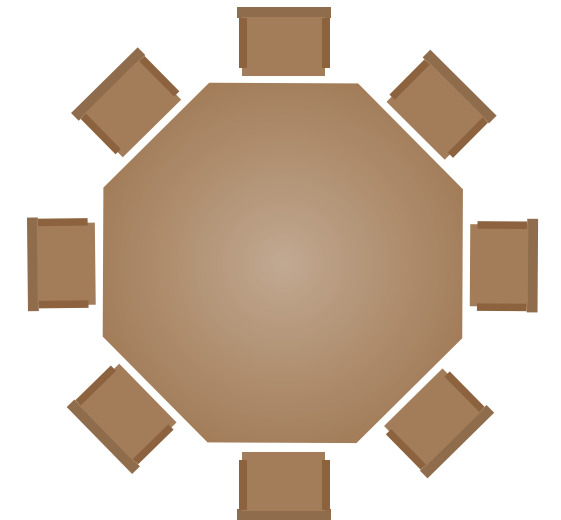
SUN BED



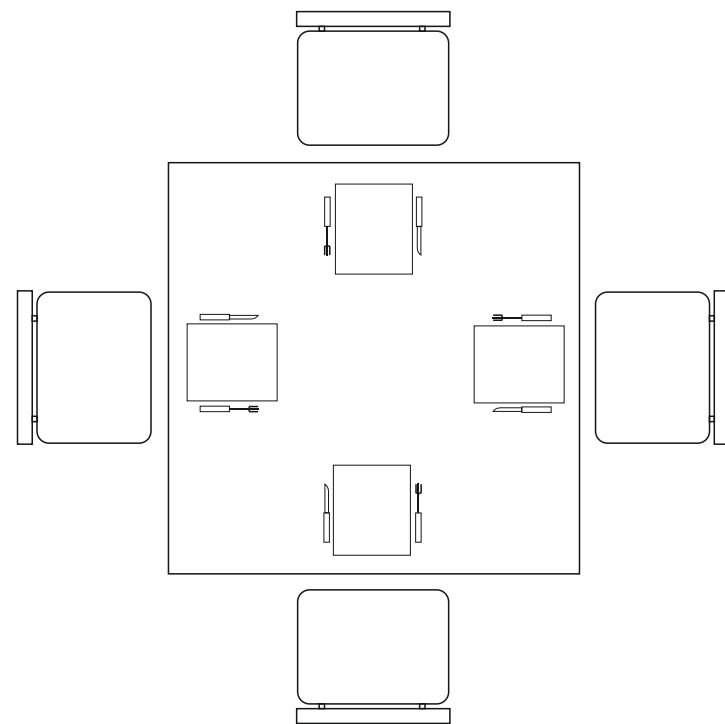
BARBEQUE



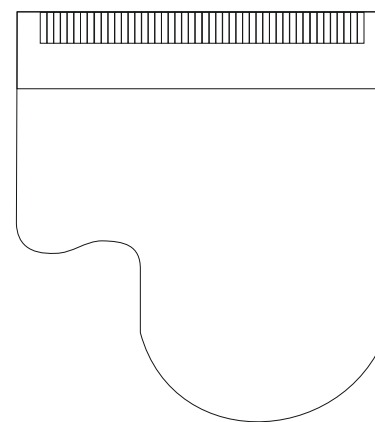
OUTDOOR TABLE AND CHAIRS



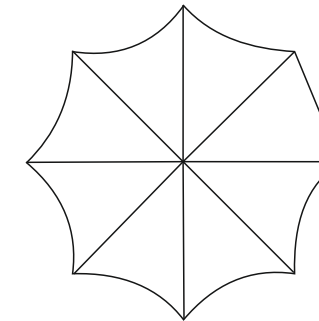
DINING TABLE AND CHAIRS



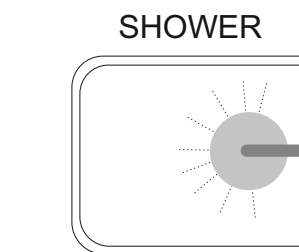
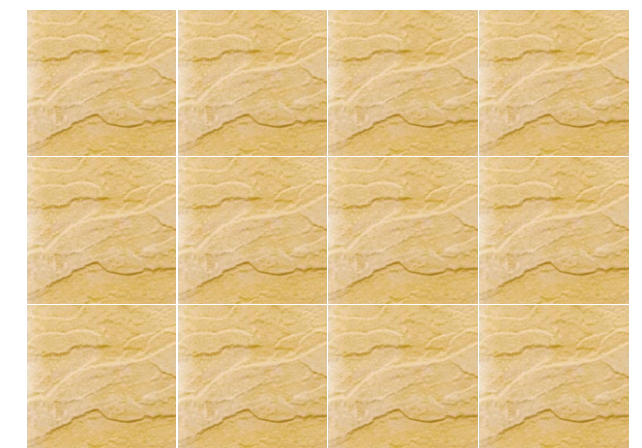
GRAND PIANO



OUTDOOR UMBRELLA



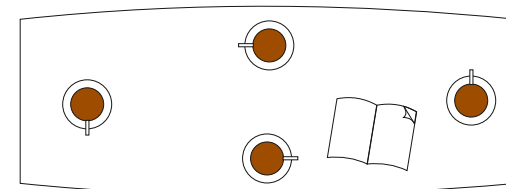
PATIO / PAVING SLABS



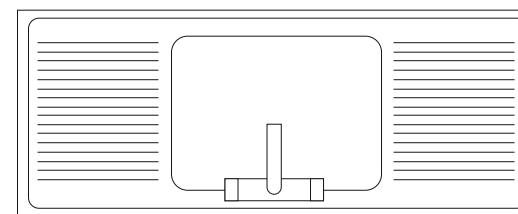
BOOKCASE



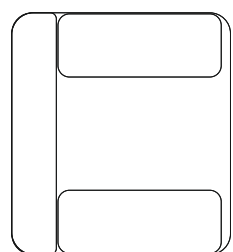
COFFEE TABLE



KITCHEN SINK UNIT



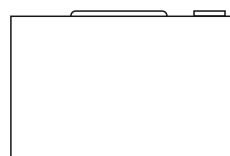
LOUNGE CHAIR



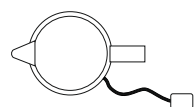
TV



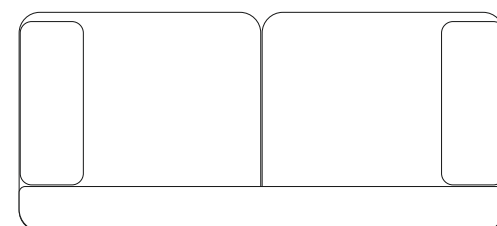
WASHING MACHINE



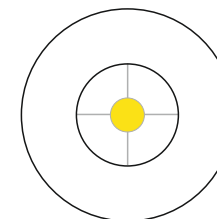
ELECTRIC KETTLE



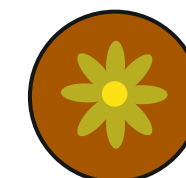
TWO SEATER SETTEE



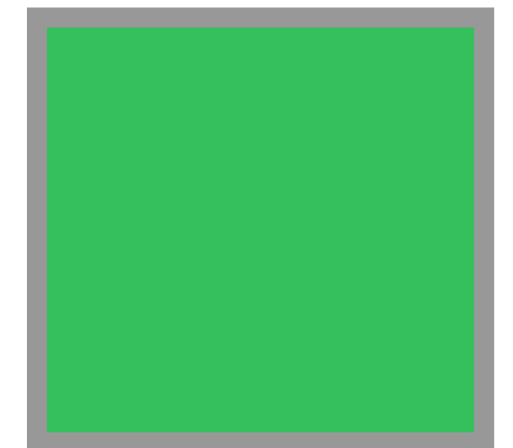
LAMP STAND / TABLE LAMP



PLANT POT



GRASS AREA WITH CURB



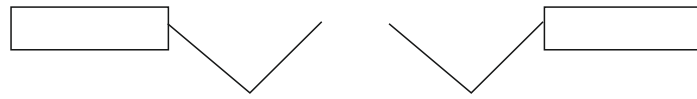
ARCHITECTURAL PLANS - SAMPLE KEY FOR FURNITURE / FITTINGS / GARDEN

PLANTS

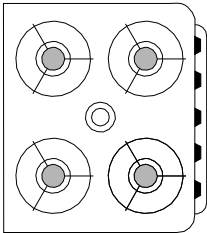
ROLLER GARAGE DOOR



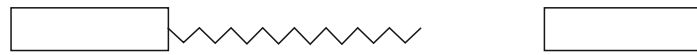
BI-FOLDING DOOR



COOKER



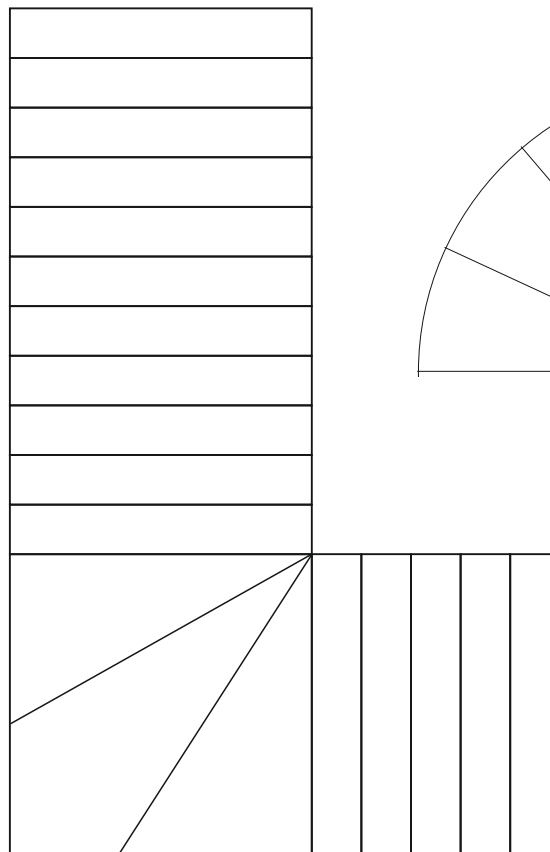
ACCORDION / PARTITION DOOR



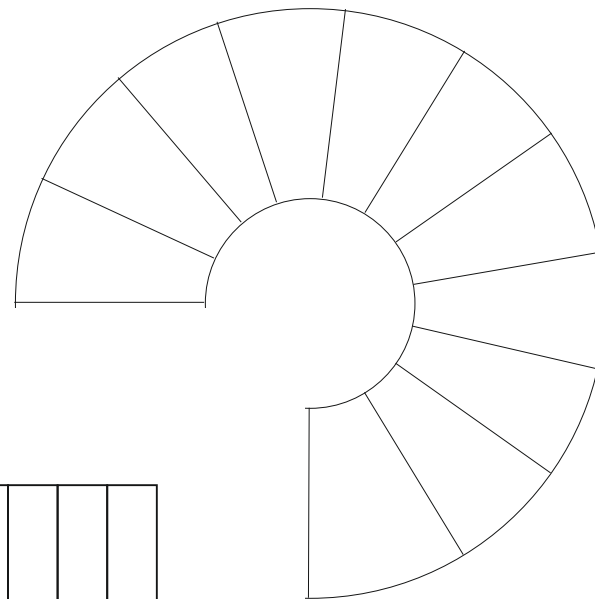
SINGLE STOREY STAIRS



WINDER STAIRS



SPIRAL STAIRCASE



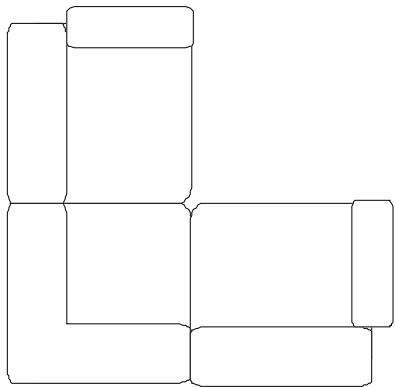
BUSH



DAFODIL



CORNER SETTEE



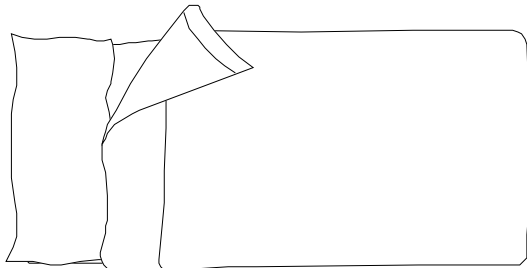
CROCUS



IRIS



SINGLE BED



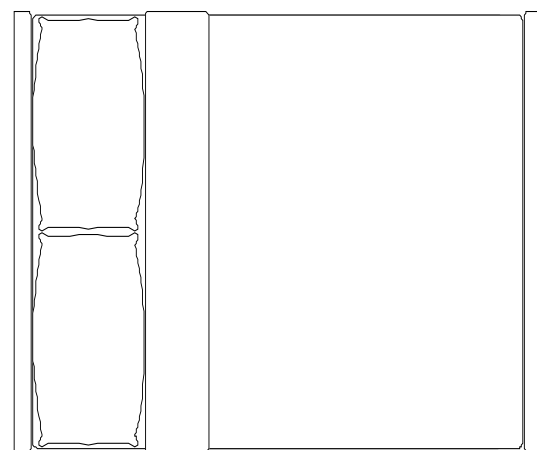
ROSE



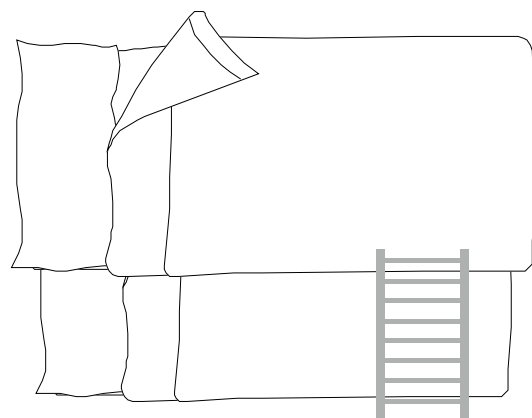
TULIP



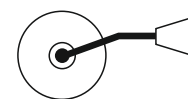
DOUBLE BED



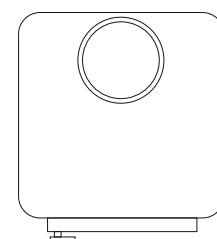
BUNK BEDS



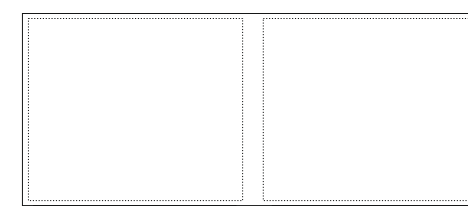
DESK LAMP



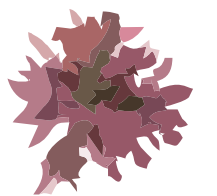
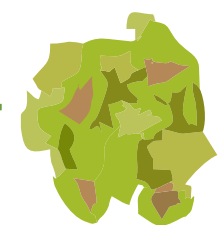
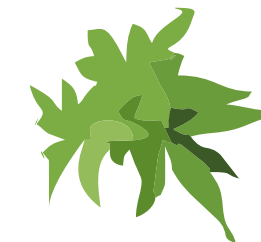
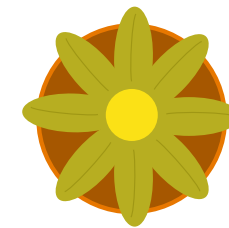
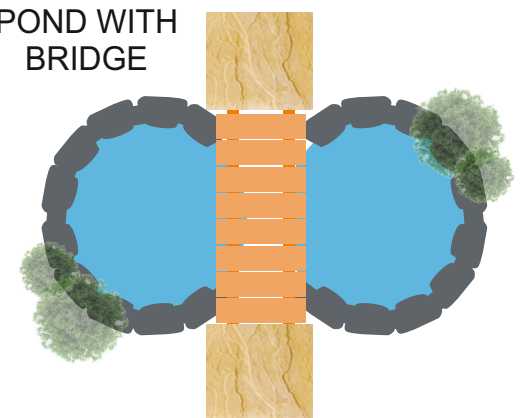
WOOD STOVE



DOUBLE STORAGE UNIT



POND WITH BRIDGE



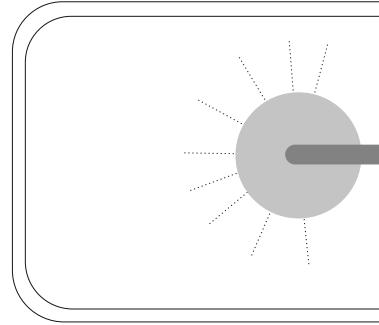
DESIGNING YOUR OWN KEY FOR AN ARCHITECTURAL LAYOUT

WORLD ASSOCIATION OF TECHNOLOGY TEACHERS <https://www.facebook.com/groups/254963448192823/> technologystudent.com © 2024 V.Ryan © 2024

Study the furniture and fittings below. Along side each one, draw a simplified plan view (architectural view), of your own design. Remember to keep your designs simple, although you could add minor detail. One example has been drawn for you.

SHOWER

V. Ryan © 2024



KITCHEN SINK UNIT



ELECTRIC CHARGING POINT



BREAKFAST BAR STOOL

V. Ryan © 2024



TABLE AND CHAIRS



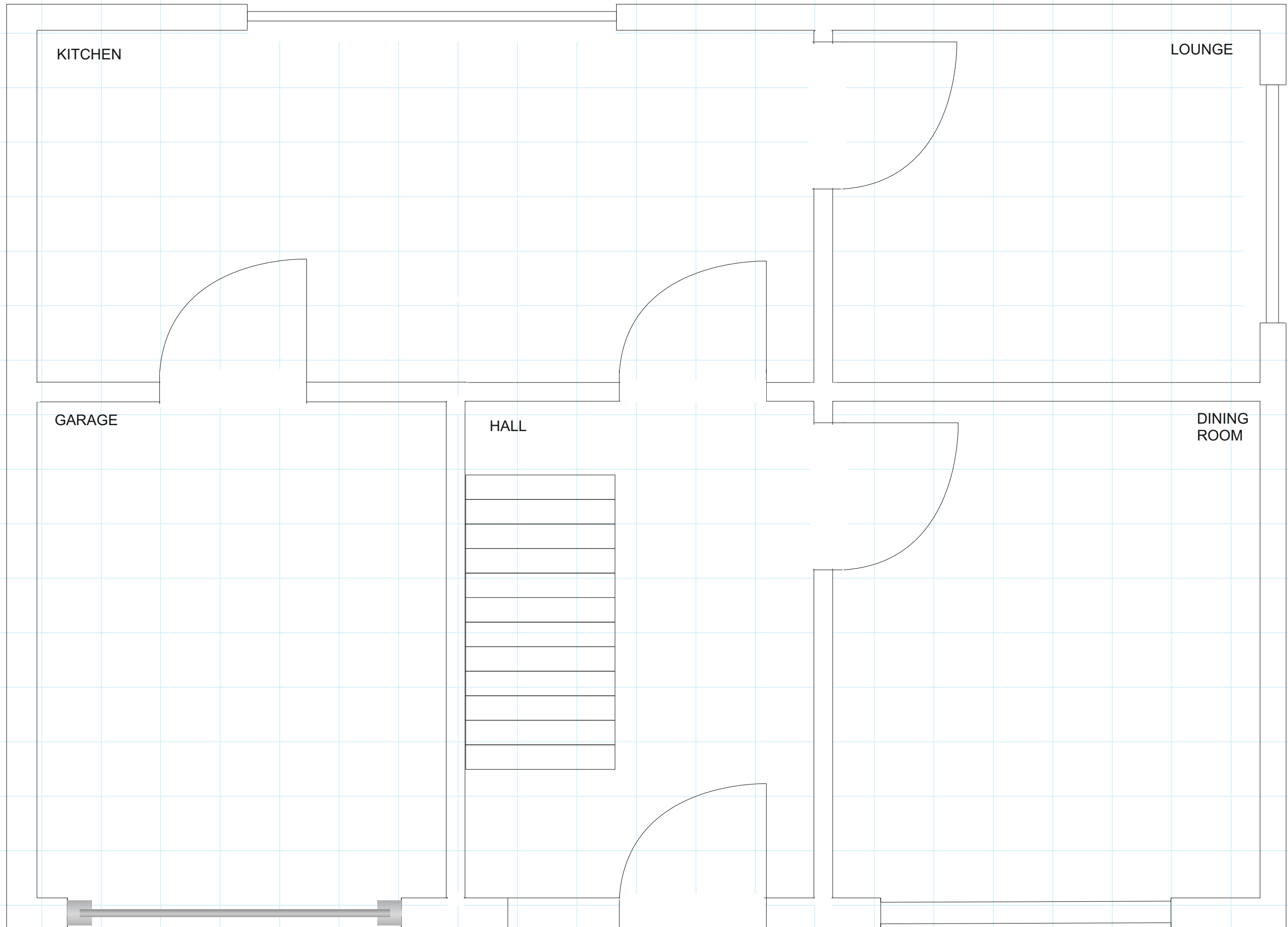
TABLE LAMP



HELPFUL LINK: <https://technologystudent.com/despro2/architec4.html>

YOUR DESIGN / LAYOUT

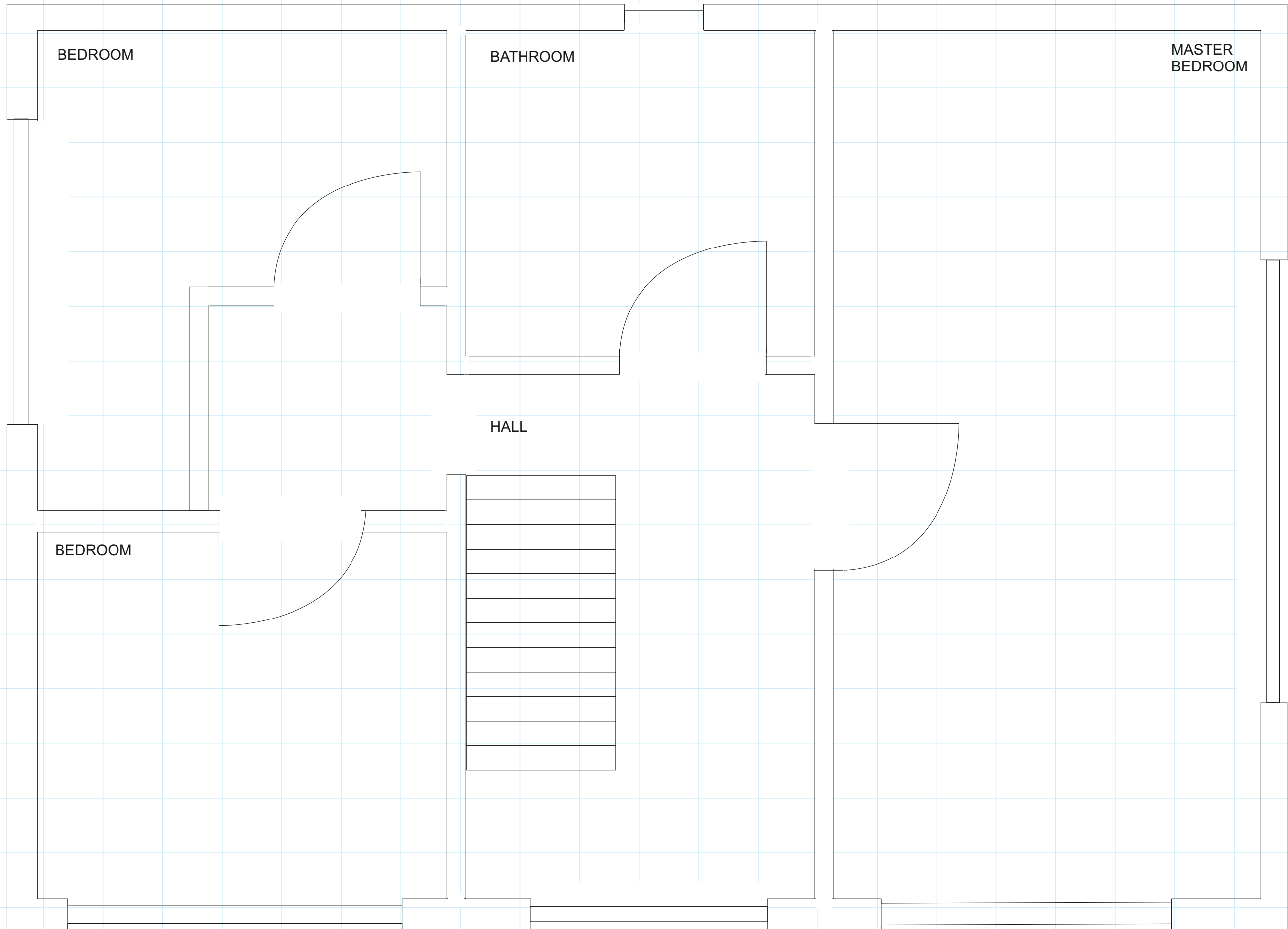
HELPFUL LINK



HELPFUL LINK: <https://technologystudent.com/despro2/architec4.html>

YOUR DESIGN / LAYOUT

HELPFUL LINK



ARCHITECTURAL PICTORIAL VIEW - MODULAR, AFFORDABLE HOUSING

You are to design a small modular home, suitable for two people. It can be regarded as a 'starter home', the first affordable home that a typical person / couple purchases. Your design must be open plan, with potential use of partitions to isolate areas of floor space (for example, the sleeping area). Your 'home' should have all the essential fixtures and fittings. The building must be constructed sustainably and be environmentally friendly. A parking space and a garden / area of relaxation, are also essential.

EXAMPLES



ARCHITECTURAL PICTORIAL VIEW - MODULAR, AFFORDABLE HOUSING

WORLD ASSOCIATION OF TECHNOLOGY TEACHERS

<https://www.facebook.com/groups/254963448192823/>

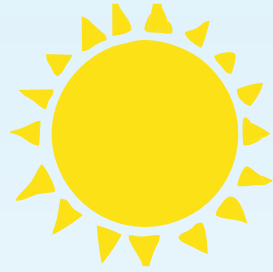
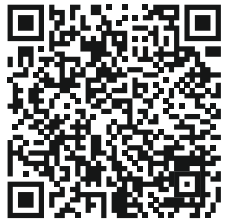
technologystudent.com © 2024

V.Ryan © 2024

HELPFUL LINK: <https://technologystudent.com/despro2/architec5.html>

SAMPLE

HELPFUL LINK



THE BUILDING IS SOUTH FACING (NORTHERN HEMISPHERE) TO TAKE ADVANTAGE OF HEAT FROM THE SUN.

THE HOUSE AND SURROUNDING GARDENS ARE CONSTRUCTED ON AN EXISTING 'BROWN-FIELD' SITE.

THE BUILDING MATERIALS ALL PASS UP TO DATE SUSTAINABILITY RATINGS.

THE HOUSE HAS SUPER FAST INTERNET AND SATELLITE COMMUNICATIONS.

AIR CONDITIONING / HEATING SYSTEM / EV VEHICLES ARE SOLAR POWERED, BACKED UP BY WIND POWER.

A ROOF GARDEN HAS BEEN ADDED FOR AESTHETIC AND ENVIRONMENTAL REASONS. IT ADDS NATURAL ROOF-TOP INSULATION.

AN INTERNAL SPIRAL STAIRCASE ALLOWS ACCESS TO THE ROOF.

RECYCLED AND RECONDITIONED TIMBER CLADDING.

THE ROOF TOP SPACE OFFERS A LEISURE AND RELAXATION AREA.

ALL LED SECURITY LIGHTS ARE SOLAR POWERED, SAVING ENERGY.

EV CHARGER FOR ELECTRIC VEHICLES

SELF CLEANING GLASS.

V.Ryan © 2024

ALL DOOR AND WINDOW LOCKS ARE CONTROLLED BY A SECURE PERSONALISED MOBILE APP.

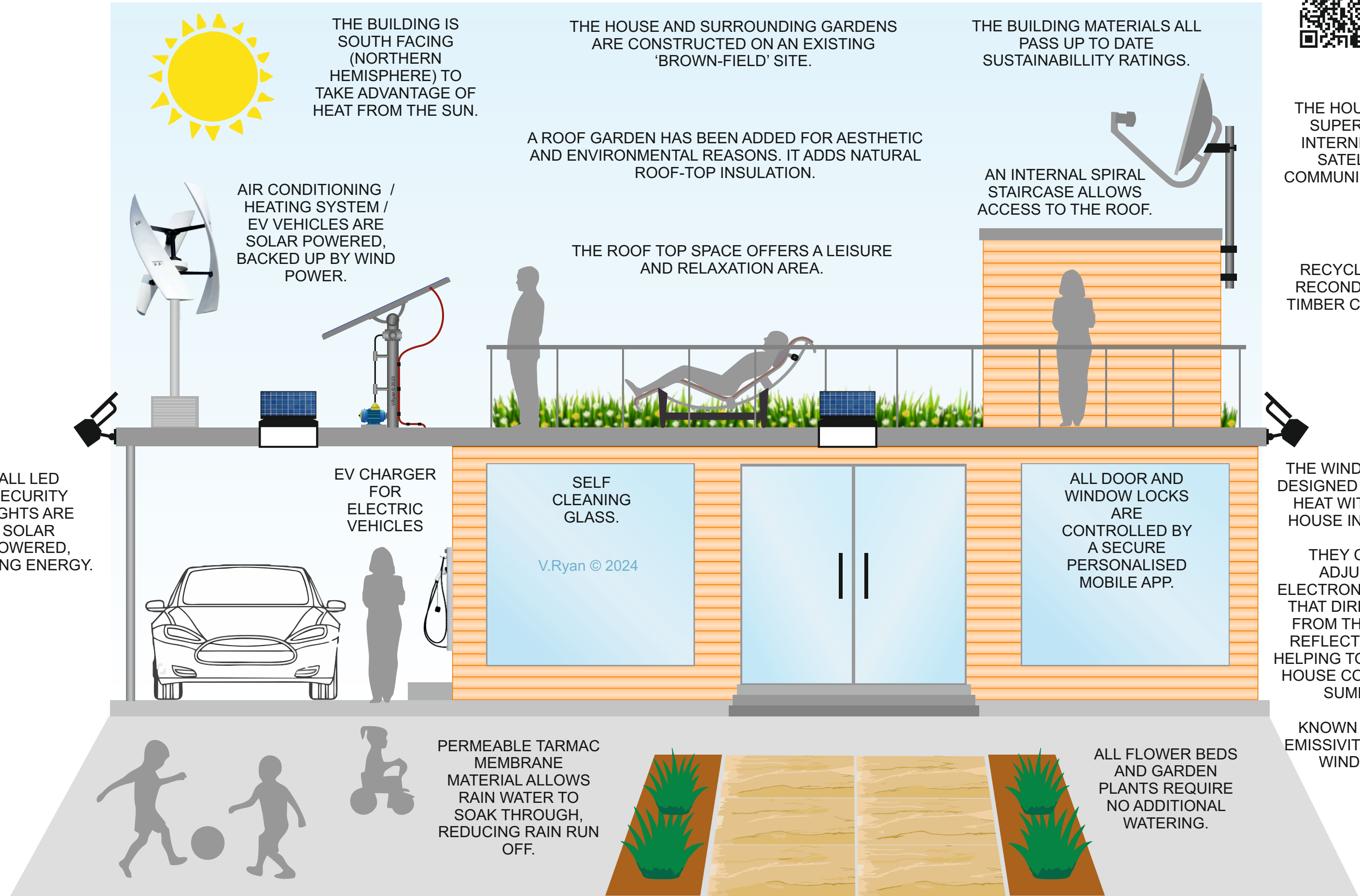
THE WINDOWS ARE DESIGNED TO RETAIN HEAT WITHIN THE HOUSE IN WINTER.

THEY CAN BE ADJUSTED ELECTRONICALLY, SO THAT DIRECT HEAT FROM THE SUN IS REFLECTED AWAY, HELPING TO KEEP THE HOUSE COOL IN THE SUMMER.

KNOWN AS LOW-EMISSION (LOW-E) WINDOWS.

PERMEABLE TARMAC MEMBRANE MATERIAL ALLOWS RAIN WATER TO SOAK THROUGH, REDUCING RAIN RUN OFF.

ALL FLOWER BEDS AND GARDEN PLANTS REQUIRE NO ADDITIONAL WATERING.



YOUR ARCHITECTURAL PICTORIAL VIEW - MODULAR, AFFORDABLE HOUSING

WORLD ASSOCIATION OF TECHNOLOGY TEACHERS

<https://www.facebook.com/groups/254963448192823/>

technologystudent.com © 2024

V.Ryan © 2024

HELPFUL LINK: <https://technologystudent.com/despro2/architec5.html>

HELPFUL LINK



AN ARCHITECTURAL PICTORIAL VIEW, IS A 'REALISTIC' DRAWING OF A BUILDING. IT INCLUDES COLOUR, SHADE, IMAGES OF PEOPLE AND DETAIL. THIS TYPE OF DRAWING IS USED EARLY IN THE DESIGN PROCESS, AS AN INDICATION OF THE DESIGN TO BE DEVELOPED. IT IS VIEWED AND DISCUSSED BY THE ARCHITECT AND CLIENT. ALTERATIONS ARE THEN MADE TO THE DESIGN.

YOUR TASK

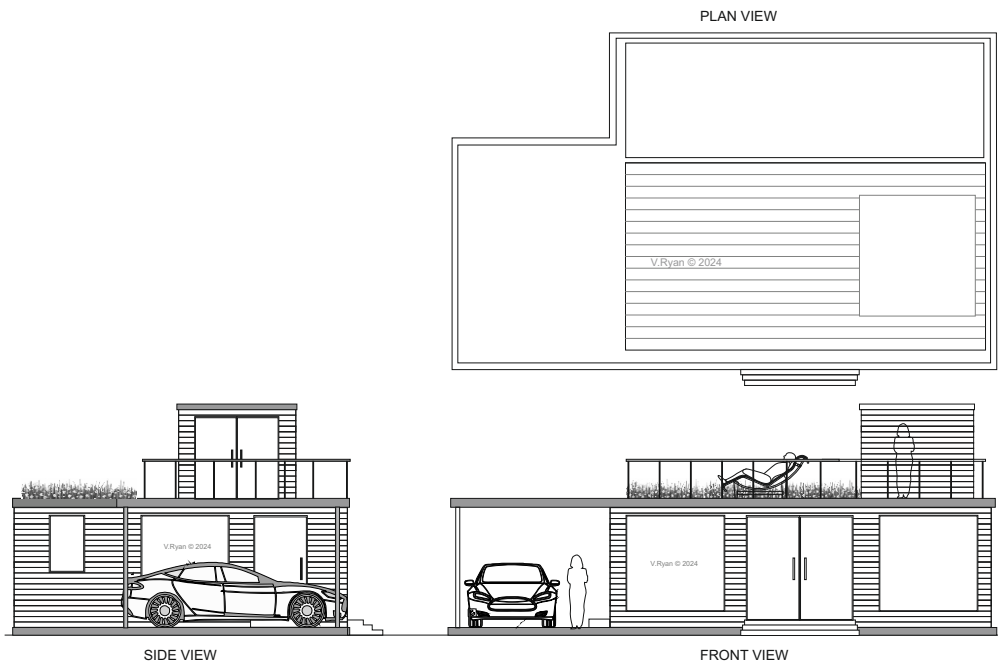
ON THIS SHEET DRAW AN ARCHITECTURAL PICTORIAL VIEW (A FRONT VIEW) OF A 'HOME' OF YOUR DESIGN. ADD NOTES TO EXPLAIN DIFFERENT ASPECTS OF THE BUILDING.

ARCHITECTURAL PLANS - LOW COST, OPEN PLAN, MODULAR AFFORDABLE HOUSING

HELPFUL LINK: <https://technologystudent.com/despro2/architec6.html>



Draw the front, side and plan view of your modular house design. You should have a good understanding of orthographic drawing before attempting this. This orthographic drawing has very little shade, typical of architectural outline drawings.



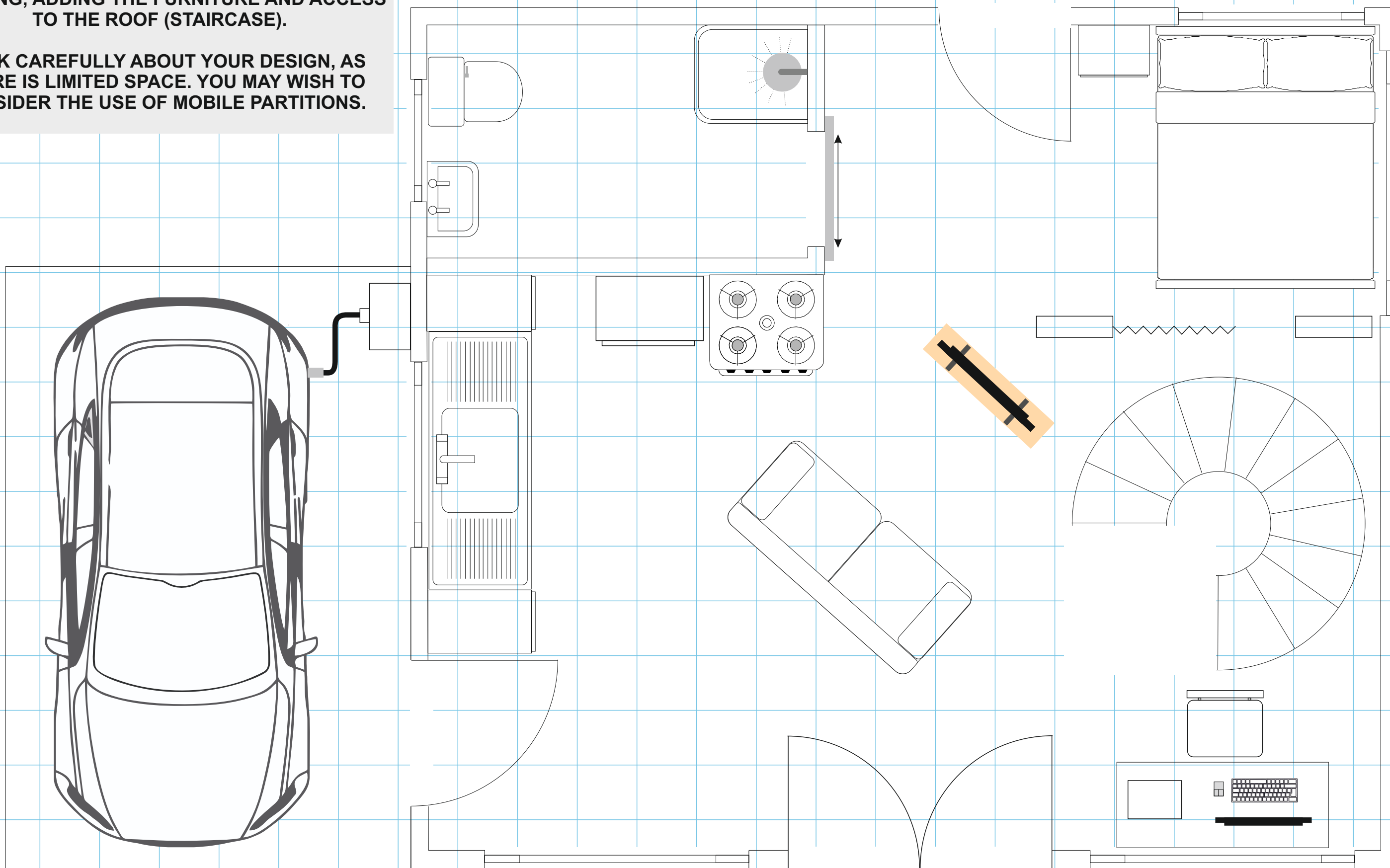
YOUR ARCHITECTURAL PLANS - LOW COST, OPEN PLAN, MODULAR AFFORDABLE HOUSING

WORLD ASSOCIATION OF TECHNOLOGY TEACHERS <https://www.facebook.com/groups/254963448192823/> [technologystudent.com](https://www.technologystudent.com) © 2024 V.Ryan © 2024

YOU ARE TO DESIGN THE LAYOUT TO THE BUILDING, ADDING THE FURNITURE AND ACCESS TO THE ROOF (STAIRCASE).

THINK CAREFULLY ABOUT YOUR DESIGN, AS THERE IS LIMITED SPACE. YOU MAY WISH TO CONSIDER THE USE OF MOBILE PARTITIONS.

SAMPLE



HELPFUL LINK: <https://technologystudent.com/despro2/architec6.html>



V.Ryan © 2024

YOUR ARCHITECTURAL PLANS - LOW COST, OPEN PLAN, MODULAR AFFORDABLE HOUSING

WORLD ASSOCIATION OF TECHNOLOGY TEACHERS <https://www.facebook.com/groups/254963448192823/> [technologystudent.com](https://www.technologystudent.com) © 2024 V.Ryan © 2024

YOU ARE TO DESIGN THE LAYOUT TO THE BUILDING, ADDING THE FURNITURE AND ACCESS TO THE ROOF (STAIRCASE).

THINK CAREFULLY ABOUT YOUR DESIGN, AS THERE IS LIMITED SPACE. YOU MAY WISH TO CONSIDER THE USE OF MOBILE PARTITIONS.

YOUR FLOOR PLAN



HELPFUL LINK: <https://technologystudent.com/despro2/architec6.html>

GARDEN LAYOUT / PLAN

WORLD ASSOCIATION OF TECHNOLOGY TEACHERS <https://www.facebook.com/groups/254963448192823/> technologystudent.com © 2024 V.Ryan © 2024

HELPFUL LINK:



HELPFUL LINK: <https://technologystudent.com/despro2/architec1.html>

YOUR GARDEN LAYOUT

KEY

- ROSE
- IRIS
- DAFFODIL
- PLANT POT
- SHRUBS
- ROOF GARDEN
- LAWN
- OUTDOOR TABLE AND CHAIRS
- SUN BED
- BARBEQUE
- POND WITH BRIDGE
- SUNSHADE AND CHAIRS
- TARMAC
- PAVED AREA
- CURB
- BICYCLE AND STAND



GARDEN LAYOUT / PLAN

WORLD ASSOCIATION OF TECHNOLOGY TEACHERS <https://www.facebook.com/groups/254963448192823/> technologystudent.com © 2024 V.Ryan © 2024

HELPFUL LINK:



HELPFUL LINK: <https://technologystudent.com/despro2/architec1.html>

YOUR GARDEN LAYOUT

KEY

A large, empty rectangular area with a dotted border, intended for drawing or writing the garden layout plan.