

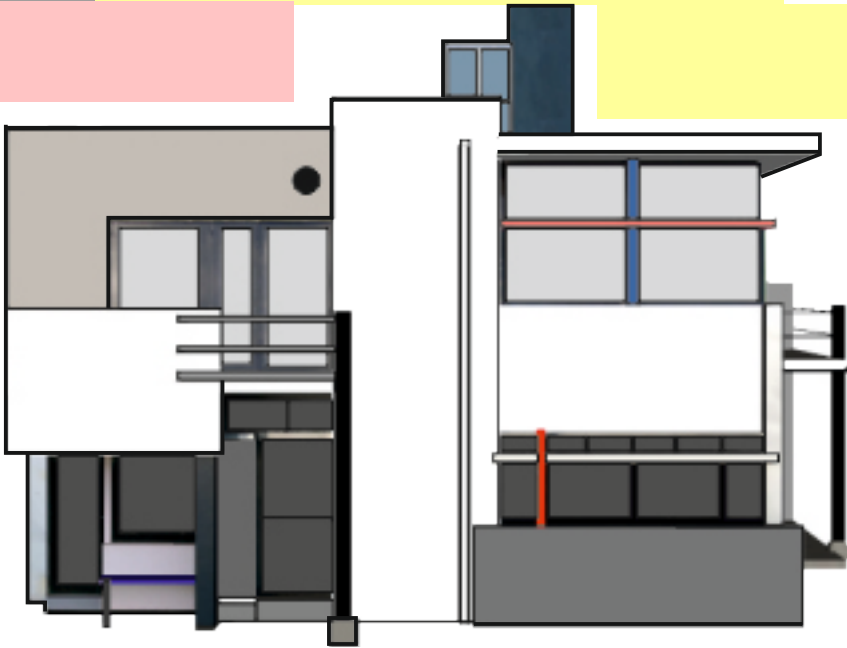
# THE DE STIJL DESIGN MOVEMENT (NEOPLASTICISM)

WORLD ASSOCIATION OF TECHNOLOGY TEACHERS

<https://www.facebook.com/groups/254963448192823/>

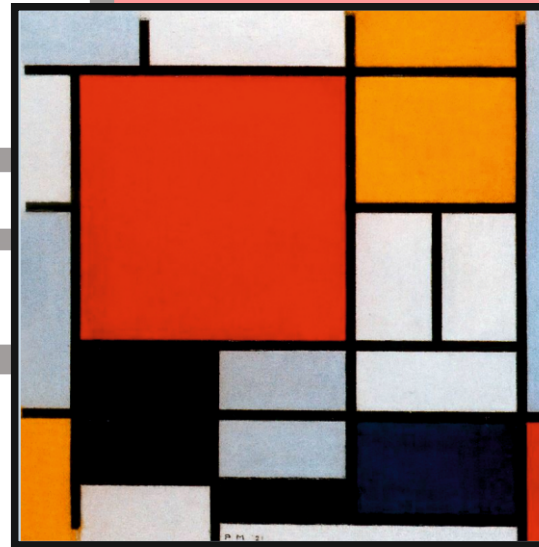
[www.technologystudent.com](http://www.technologystudent.com) © 2017

## THE RIETVELD SCHRODER HOUSE



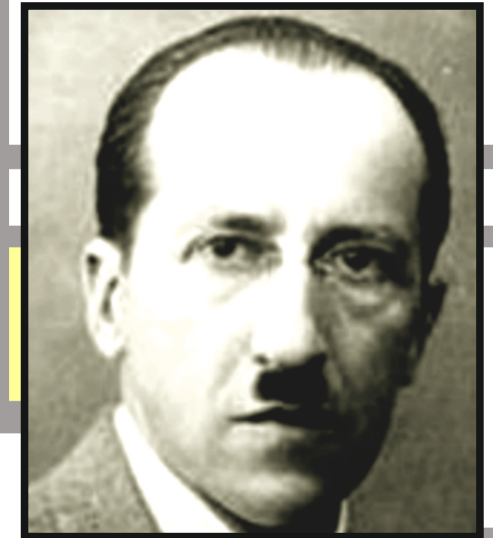
## COMPOSITION WITH RED, YELLOW, BLUE AND BLACK.

By Piet Mondrian



## PIET MONDRIAN

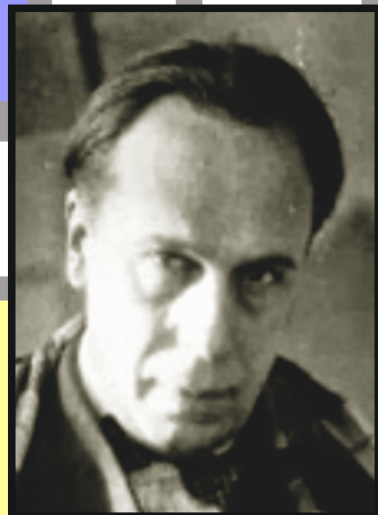
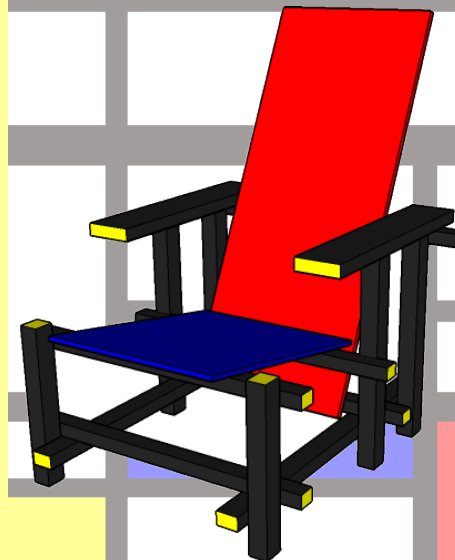
(1872 to 1944)



### WHAT IS THE 'DE STIJL' DESIGN MOVEMENT ?

THE DE STIJL DESIGN MOVEMENT (ALSO CALLED NEOPLASTICISM) ORIGINATED IN HOLLAND IN 1917 . IT PROMOTED A STYLE OF DESIGN BASED ON A LIMIT RANGE OF COLOURS (PRIMARY COLORS, RED, YELLOW, AND BLUE), USED IN CONJUNCTION WITH A COMBINATION OF HORIZONTAL AND VERTICAL LINES.

DE STIJL'S TRUE ORIGIN CAN BE TRACED BACK TO CUBISM. ALSO, THE ARTWORK OF PIET MONDRIAN GREATLY INFLUENCED THE DE STIJL COLOUR SCHEME AND STYLE.



**THEO VAN DOESBURG**  
(1883 to 1931)



**GERRIT RIETVELD**  
1888 to 1964